



Radial interpolation of GPS and leveling data of ground deformation in a resurgent caldera: application to Campi Flegrei (Italy)

Andrea Bevilacqua¹ · Augusto Neri¹ · Prospero De Martino² · Roberto Isaia² · Alessandro Novellino³ · Francesco D'Assisi Tramparulo² · Stefano Vitale^{2,4}

Received: 1 May 2019 / Accepted: 20 January 2020
© The Author(s) 2020

Abstract

This study presents a new method, called the Radial Interpolation Method, to interpolate data characterized by an approximately radial pattern around a relatively constrained central zone, such as the ground deformation patterns shown in many active volcanic areas. The method enables the fast production of short-term deformation maps on the base of spatially sparse ground deformation measurements and can provide uncertainty quantification on the interpolated values, fundamental for hazard assessment purposes and deformation source reconstruction. The presented approach is not dependent on a priori assumptions about the geometry, location and physical properties of the source, except for the requirement of a locally radial pattern, i.e., allowing multiple centers of symmetry. We test the new method on a synthetic point source example, and then, we apply the method to selected time intervals of real geodetic data collected at the Campi Flegrei caldera during the last 39 years, including examples of leveling, Geodetic Precise Traversing measurements and Global Positioning System. The maps of horizontal displacement, calculated inland, show maximum values lying along a semicircular annular region with a radius of about 2–3 km in size. This semi-annular area is marked by mesoscale structures such as faults, sand dikes and fractures. The maps of vertical displacement describe a linear relation between the maximum vertical uplift measured and the volume variation. The multiplicative factor in the linear relation is about $0.3 \times 10^6 \text{ m}^3/\text{cm}$ if we estimate the proportion of the ΔV that is captured by the GPS network onland and we use this to estimate the full ΔV . In this case, the 95% confidence interval on K because of linear regression is $\pm 5\%$. Finally, we briefly discuss how the new method could be used for the production of short-term vent opening maps on the base of real-time geodetic measurements of the horizontal and vertical displacements.

Keywords GPS · Leveling · InSAR · Ground deformation · Campi Flegrei caldera

Andrea Bevilacqua: Formerly at the Department of Earth Sciences, SUNY at Buffalo, Buffalo, NY, United States.

Electronic supplementary material The online version of this article (<https://doi.org/10.1007/s00190-020-01355-x>) contains supplementary material, which is available to authorized users.

✉ Andrea Bevilacqua
andrea.bevilacqua@ingv.it

- ¹ Istituto Nazionale di Geofisica e Vulcanologia (INGV), Sezione di Pisa, Pisa, Italy
- ² Istituto Nazionale di Geofisica e Vulcanologia (INGV), Sezione di Napoli Osservatorio Vesuviano, Naples, Italy
- ³ British Geological Survey, Nicker Hill, Keyworth NG12 5GG, UK
- ⁴ Dipartimento di Scienze della Terra, dell'Ambiente e delle Risorse (DiSTAR), Università di Napoli Federico II, Naples, Italy

1 Introduction

Ground deformation is a feature constantly and accurately monitored in many active and high-risk volcanic areas (e.g., Palano et al. 2008; Fournier et al. 2010; Lagios et al. 2013; Gonzalez et al. 2013; Di Traglia et al. 2014; Trasatti et al. 2015; Stramondo et al. 2016; Chen et al. 2017). Indeed, significant deformation can take place in response to the injection/removal of magma bodies, magmatic fluids and/or hydrothermal fluids in the volcanic system (e.g., Accella et al. 2015; de Silva et al. 2015; Hildreth et al. 2017). Ground deformation can therefore represent a fundamental eruption precursor (e.g., Voight et al. 1998, 2000; Cervelli et al. 2006; Chadwick et al. 2011; Chaussard and Amelung 2012; Robertson and Kilburn 2016).

Several techniques measuring ground deformation in calderas are available (Dzurisin 2006; Poland et al. 2006), including leveling (Dzurisin et al. 2002; Yokoyama 2013; Murase et al. 2014), Geodetic Precise Traversing (GPT; Barbarella et al. 1983; Punmia and Jain 2005), Global Positioning System (GPS, Dixon et al. 1997), tiltmeters, dilatometers, tide gauge (Mori et al. 1986), electronic distance measurements (EDM) and, more recently, interferometric synthetic aperture radar (InSAR, Massonnet and Feigl 1998; Burgmann et al. 2000; Parker et al. 2014; Tizzani et al. 2015; Stramondo et al. 2016). Ground-based techniques are in general sparse in space but almost continuous in time, while InSAR has good spatial resolution but time gaps of hours/days. In this study, we focus on the most classical techniques such as leveling, GPT and GPS, which usually provide the longest temporal datasets of ground displacement, but that are often significantly sparse in space.

Ground leveling is the oldest technique that has been applied in volcanic areas for monitoring the ground deformation. It compares the elevation in fixed benchmarks with respect to a given datum at a sequence of discrete times. GPT networks involve placing survey stations along a line or path of travel and use the previously surveyed points as a baseline for observing the next point. This method produces more information than traditional leveling, including horizontal displacement measured by a triangulation between the stations, although measured on spatially localized and fixed paths, and still discrete in time. GPS stations using precise satellite positions and clocks have been more commonly utilized in recent years and can provide, unlike of the

former methods, time-continuous data of vertical and horizontal ground displacement components, but often refer to a still relatively small number of measurement sites scattered on a large spatial region. A reconstruction of the full ground displacement field by interpolation of sparse GPS measurements was recently undertaken on the volcanic caldera of Santorini (Greece) by Lagios et al. (2013). They performed the comparison between GPS data and space-borne InSAR data without a specific focus on the interpolation method applied. A similar approach was applied by Amoruso et al. (2014a, b), D'Auria et al. (2015) and Trasatti et al. (2015) at the Campi Flegrei caldera. In these studies, a model including the intrusion at shallow depth of magma within a sill was tested using (i) leveling, GPT and InSAR data (Amoruso et al. 2014a, b); (ii) GPS and InSAR data (D'Auria et al. 2015); and (iii) GPS, leveling and InSAR data (Trasatti et al. 2015).

In this work, we present a simple method for interpolating sparse deformation measurements showing an approximately radial pattern, both in intensity and orientation, with respect to a localized central area. The method is called “Radial Interpolation Method” (RIM, in short). It allows the construction of both the vertical and horizontal components of the full displacement field, a task particularly challenging, especially for historical unrest episodes when InSAR data were not available or in places where InSAR is not possible (e.g., poor coherence) (e.g., Newhall and Dzurisin 1988a, b). The new method is applied to the spatially sparse ground deformation measurements recorded in the Campi Flegrei caldera (Fig. 1) after 1980 by means of leveling and GPT

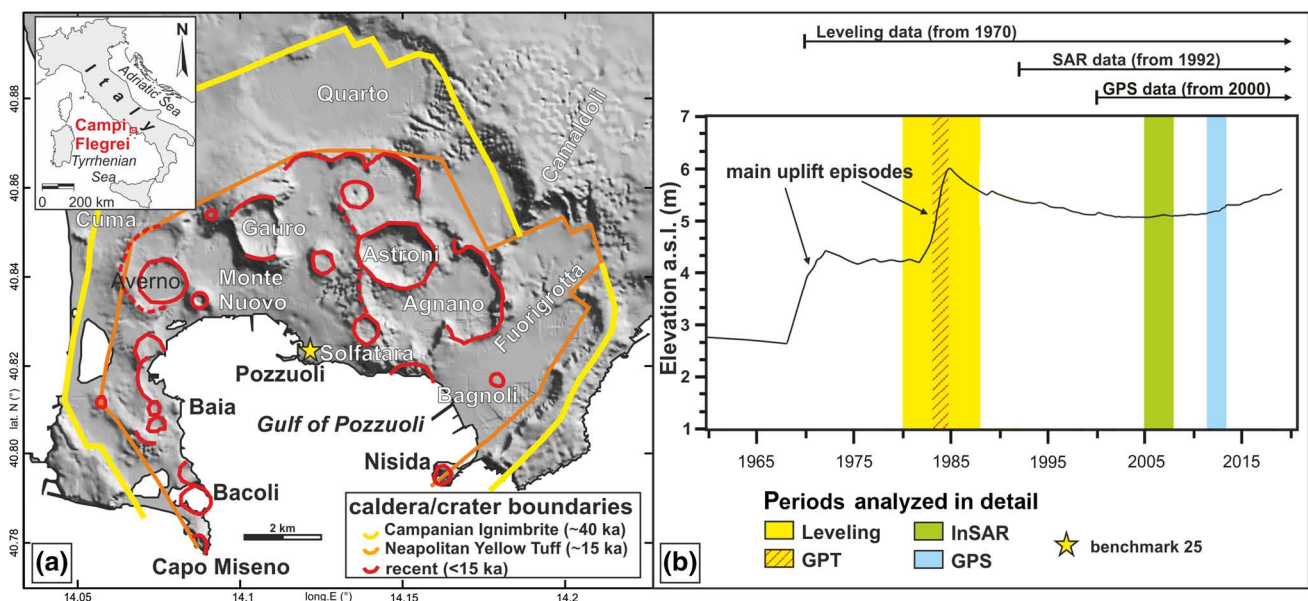


Fig. 1 **a** Digital elevation map of Campi Flegrei caldera showing caldera and crater boundaries (modified after Vitale and Isaia 2014). Lat–Long coordinate system. **b** Elevation curve of the benchmark

25 located in the Pozzuoli town in the interval 1960–2018 (modified after Del Gaudio et al. 2010). The plot shows also the analyzed periods and the type of dataset

surveys and by GPS continuous stations. We include in the analysis a detailed uncertainty quantification of the new technique. Furthermore, we broadly estimate the volume variation of the ground both during uplift and subsidence episodes according to the RIM displacements maps, and we do a preliminary comparison with those calculated from the processing of InSAR acquisitions (see “Appendix A”). On these volume estimates, we test the effect of various assumptions on the radial extent of the interpolated region and on the offshore portion of the caldera. This volume variation may or may not be equivalent to the volume change at the source of deformation, depending on the source geometry and depth (e.g., Lisowski 2006).

Finally, we discuss how the interpolated data may be used as the input of analytical source models, possibly in conjunction with remote sensing observations, or become a key input for the Bayesian updating of vent opening probability maps, for example, at Campi Flegrei caldera.

This study has the main purpose to present the new interpolation method, and the secondary purpose to show its application to the Campi Flegrei special case. The interpretation from a volcanic processes point of view is beyond our scope.

2 Geological setting of the analyzed area

We test our approach on the Campi Flegrei caldera, one of the most studied and monitored volcanic areas in the world. We choose this case study because of data availability and of the significant implications in terms of hazard assessment. Campi Flegrei caldera (Fig. 1a) is located on the western coast of the Campania region (southern Italy; Vitale and Ciarcia 2018) in a very urbanized area, including the western part of the city of Napoli. Two caldera-forming eruptions, i.e., the Campanian Ignimbrite (~40 ka; Costa et al. 2012; Giaccio et al. 2017) and the Neapolitan Yellow Tuff (~15 ka, Orsi et al. 1992; Scarpati et al. 1993; Deino et al. 2004), produced two nested calderas, of which the largest is ~12 km wide (e.g., Acocella 2008). In the last 15,000 years, this area experienced at least 70 eruptions (Rosi et al. 1983; Di Vito et al. 1999; Orsi et al. 2004; Isaia et al. 2009; Smith et al. 2011; Isaia et al. 2015; Bevilacqua 2016; Bevilacqua et al. 2015; 2016). In the last century, Campi Flegrei displayed several uplift and subsidence episodes called bradyseism. Three main phases of uplift occurred in the periods 1950–1952, 1968–1972 and 1980–1984, usually accompanied by earthquakes at shallow depths and concentrated around the Solfatara crater and beneath the town of Pozzuoli and the Pozzuoli Bay (e.g., Kilburn et al. 2017; Castaldo et al. 2018). This produced a net vertical displacement of ca. 3.8 m from the minimum of 1950, measured in 1985 in the central part of the caldera (Del Gaudio et al. 2010; Amoroso

et al. 2014a, b; De Martino et al. 2014a; Troise et al. 2019). Since 2005, after 20 years long phase of subsidence with a total vertical displacement of ca. –1 m, the Campi Flegrei caldera has been raising again with a slower rate than in the previously occurred main phases of uplift, but slowly accelerating (Chiodini et al. 2017; Bevilacqua et al. 2018, 2019; Patra et al. 2019); <http://www.ov.ingv.it/ov/it/campi-flegrei/monitoraggio.html>), with a total maximum vertical displacement in the central area of ca. 63 cm (November 2019).

Despite the large amount of data acquired by the multidisciplinary monitoring networks in the last years, the magmatic versus hydrothermal origin of the uplift and subsidence episodes within the Campi Flegrei is still a matter of debate (e.g., Bonasia et al. 1984; Bonafede 1991; Battaglia et al. 2006; De Natale et al. 2006; Amoroso et al. 2008; Lima et al. 2009; Woo and Kilburn 2010; Amoroso and Crescentini 2011; Trasatti et al. 2011; Troiano et al. 2011; Amoroso et al. 2014a, b; Caliro et al. 2014; Macedonio et al. 2014; Todesco et al. 2014; D’Auria et al. 2015; Giudicepietro et al. 2016, 2017, Kilburn et al. 2017; Troise et al. 2019).

3 Ground deformation data at Campi Flegrei caldera

In summary, the ground displacement measurements recorded at Campi Flegrei in the last 39 years generally show approximately radial patterns both in terms of intensity and orientation, i.e., axial symmetry (Corrado et al. 1977; Berrino et al. 1984; Bianchi et al. 1987; Orsi et al. 1999; De Martino et al. 2014a, b; Amoroso et al. 2014a, b; Iannaccone et al. 2018). The maximum vertical displacement (uplift or subsidence) is located in the town of Pozzuoli, in the central part of the Campi Flegrei caldera (benchmark 25, Fig. 1a).

3.1 Leveling and Geodetic Precise Traversing data

Campi Flegrei ground deformation data have been systematically collected from 1970, through the technique of the leveling lines (Corrado et al. 1977; Berrino et al. 1984; Bianchi et al. 1987). This technique can only provide measurements of the vertical displacement and consists in measuring height differences within a network of lines formed by permanent benchmarks, as a function of time. After June 1983, lines (from A to H, Fig. 2a, b) and benchmarks were increased in number (Amoroso et al. 2014a, b and reference therein). In June 1980 and June 1983, the leveling records were accompanied by GPT surveys—i.e., by distance and angular measurements (Barbarella et al. 1983) that allowed, for the first time, to describe also the horizontal component of the ground deformation. Horizontal and vertical component data were later used to infer and model the magmatic source by a number of studies (e.g., Berrino et al. 1984; Bianchi et al.

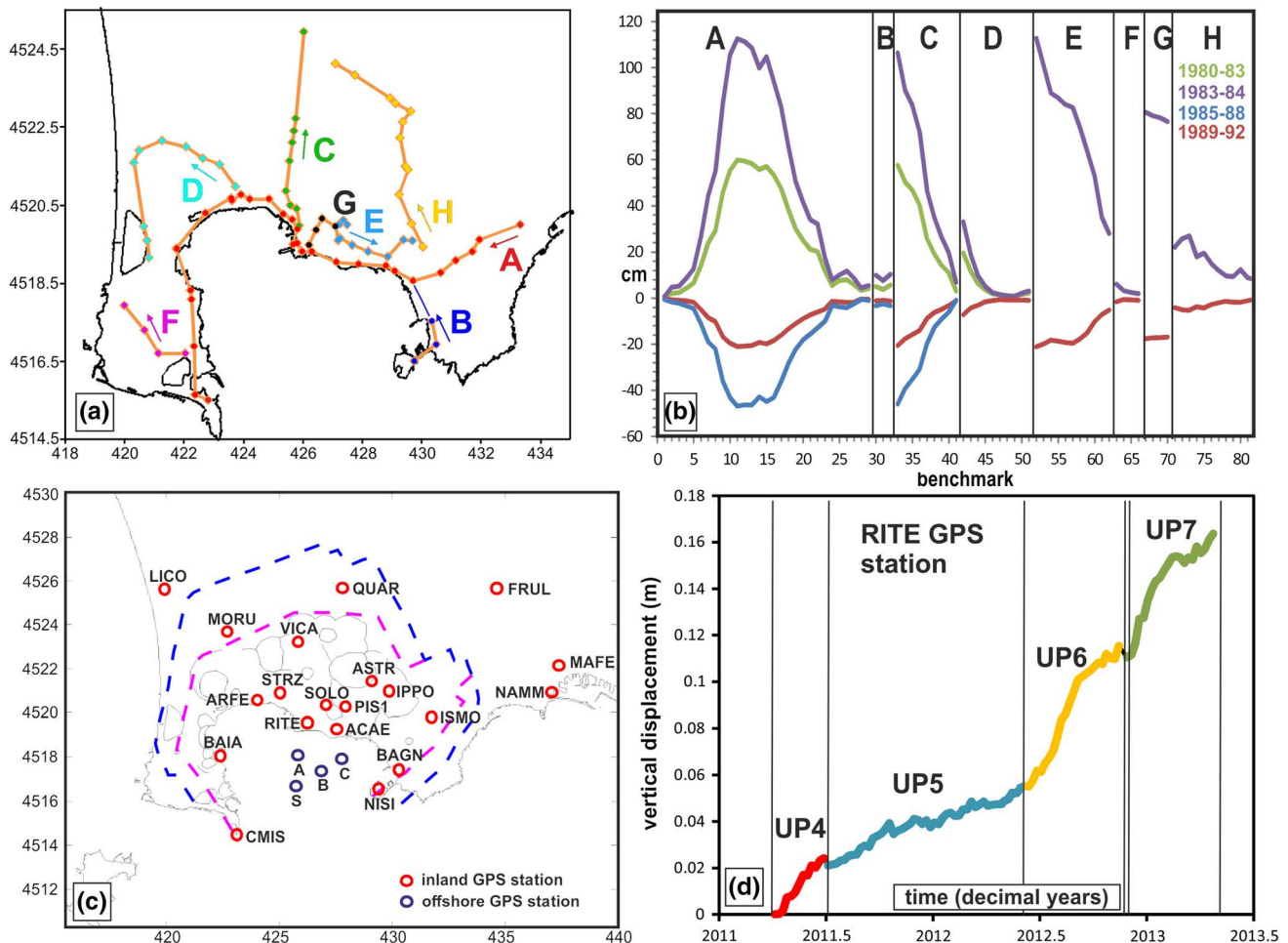


Fig. 2 **a** Spatial distribution of leveling paths. Different paths are marked with different colors. **b** Vertical displacement time series for different paths (A to H) and periods (modified from Amoruso et al. 2014a, b). **c** Spatial distribution of the NeVoCGPS network. **d** Exam-

ple of vertical displacement measurements for the RITE station showing the four episodes of ground uplift recorded at Campi Flegrei in the period 2011–2013 (modified from De Martino et al. 2014a). **a**, **c** are in UTM WGS84 coordinate system, Zone 33 N (km)

1987; Troise et al. 2007; Amoruso et al. 2014a, b). In our study, we analyze GPT data (also called EDM, i.e., Electronic Distance Measuring) from Amoruso et al. (2014a,b) and unpublished data collected by the leveling network of the Vesuvius Observatory (INGV Napoli). This includes leveling measurements recorded in the periods 1980–1983 (uplift), 1983–1984 (uplift), 1985–1988 (subsidence) and GPT measurements recorded in 1983–1984. We summarize these data in Supporting Information SI5 and SI6.

3.2 GPS data and InSAR

Campi Flegrei has been continuously monitored from 2000 by a GPS network named “Neapolitan Volcanoes Continuous GPS” (NeVoCGPS). A total of 25 stations are present (20 inland and 4 in the Pozzuoli Gulf) covering an area of about 130 km². More details on data recording and processing are described in De Martino et al. (2014a, b) and Iannaccone

et al. (2018). Inland GPS devices provide measurements of the ground displacement as 3D vectors composed of vertical (1D) and horizontal (2D) components, while the offshore stations measure the vertical displacements only (De Martino et al. 2014b). We separately describe interpolated maps of both vertical and horizontal components, considering the modulus of the horizontal component. During the period 2000–2013, seven episodes of uplift with time span greater than 0.23 years and/or a speed greater than 18 mm/yr have been identified in the RITE GPS time series (De Martino et al. 2014a). These are called UP1–UP7. Specifically, we analyzed GPS measurements between April 2011 and April 2013. The civil protection authorities raised the alert level of Campi Flegrei to “Yellow” (warning) in 2012, and this level has been maintained for 7 years afterward (in 2019 at the time of writing). These series were recorded by GPS stations during four minor uplift periods named UP4 to UP7 (Fig. 2c, d). We report in Supporting Information SII

the weekly time series of the GPS network for the period 2000–2013, from De Martino et al. 2014a. We summarize in Supporting Information SI4 the data describing the four uplift episodes considered in this study.

The Campi Flegrei caldera has also been continuously monitored by InSAR technology starting from 1992 (ERS, ENVISAT and Sentinel-1 satellites). By exploiting the deformation measurements taken over the same point from two different acquisition geometries (namely the ascending and descending orbits), it is possible to retrieve the 3D displacement/velocity field by combining ascending and descending scenes (Dalla Via et al. 2012). In “Appendix A,” we include two examples of vertical displacement maps based on the processing of InSAR data, focusing on the time window 2004–2007. The related estimates of volume variation of the ground and the vertical uplift observed at RITE station show the same linear relation of those based on our new interpolation method.

4 The Radial Interpolation Methods

Strain fields associated with magmatic inflation/deflation, and sill intrusion, generally show a radial pattern of the displacement vectors, both in intensity and orientation (e.g., Mogi 1958; Okada 1985; Davis 1986; Fialko et al. 2001; Miyagi et al. 2004; Ukawa et al. 2006; Palano et al. 2008; Chadwick et al. 2011; Hooper et al. 2011; Lagios et al. 2013; Ji et al. 2013; Grapenthin et al. 2013; Galgana et al. 2014). If the data are few and spatially scattered (e.g., GPS measurements—Figs. 2c, 3a), or sparse in localized areas (e.g., leveling data—Figs. 2a, 3b), the common interpolation methods used, such as linear, cubic, natural and spline, can provide inaccurate results because they do not preserve a radial symmetry in the deformation field. The new interpolation

method proposed in this study instead exploits the locally radial geometric pattern to better reconstruct the strain field in the region, possibly covering areas far away from the data points.

4.1 The algorithm

Our method is based on a multipolar interpolation, i.e., we apply a linear interpolation between pairs of vectors, working in polar coordinates with respect to the intersection of the straight lines defined by their horizontal components (Fig. 3c). In particular, we first provide one-dimensional interpolations along the arcs connecting pairs of points, and then, we fill the rest of the space according to a two-dimensional interpolation technique. In the considered examples, we utilize a linear interpolation, but this choice is not restrictive.

Ground displacement vectors are applied vectors, expressed by the coordinates $\mathbf{x} = (x, y)$ of the point of application of the vector, in addition to the displacement coordinates $\mathbf{d} = (d_x, d_y, d_z)$. What we are interpolating is a field of 3D vectors defined on a 2D domain; thus, the interpolation technique is defined in $\mathbb{R}^2 \times \mathbb{R}^3$.

By considering a dataset of applied vectors $\{\mathbf{v}^{(i)} = (\mathbf{x}^{(i)}, \mathbf{d}^{(i)}), i = 1, \dots, N\}$, RIM can be described by the following steps:

- (A) **Graph Construction** We define an undirected graph $G = (X, E)$. The set of nodes $X \subseteq \{\mathbf{x}^{(i)} : i = 1, \dots, N\}$ includes all the *acceptable* spatial locations, i.e., excluding defective data. The set of edges E includes all the couples $E^{(ij)} = (\mathbf{x}^{(i)}, \mathbf{x}^{(j)})$ of *consistent* nodes, i.e., excluding those associated with sub-parallel horizontal

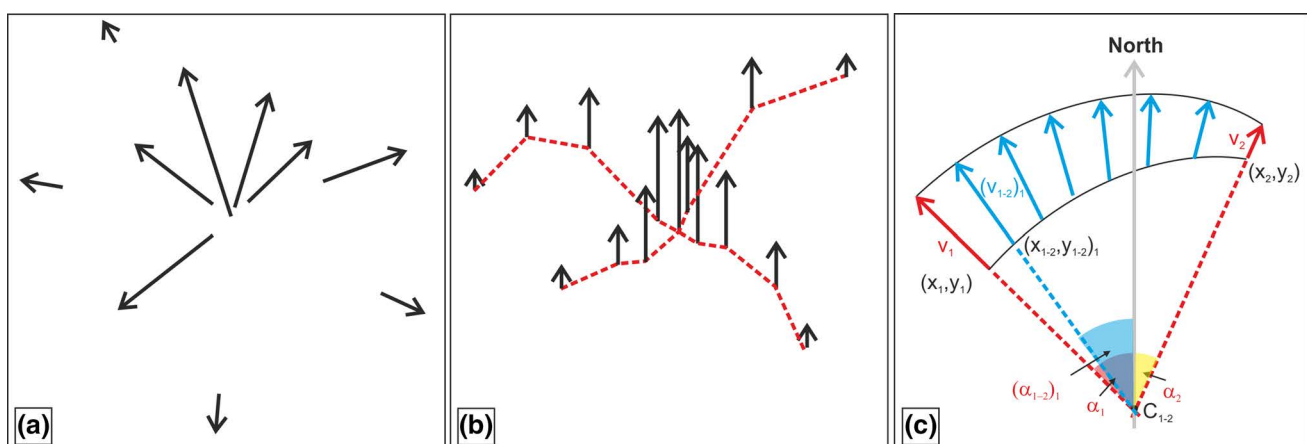


Fig. 3 Displacement radial pattern examples of: **a** scattered horizontal components, typical of GPS; **b** localized vertical components, typical of leveling; **c** scheme of the multipolar interpolation, where an elliptic arc delineates the convex hull of the virtual displacements

components of the displacement vectors, or those that overlap with clusters of other nodes.

- (B) **Multipolar Primary Interpolation** For each $E^{(ij)} \in E$, we define a pole $P^{(ij)}$ at the intersection between the straight lines $\left\{ \mathbf{x}^{(i)} + k \begin{pmatrix} d_x^{(i)} \\ d_y^{(i)} \end{pmatrix} \mid k \in \mathbb{R} \right\}$ and $\left\{ \mathbf{x}^{(j)} + h \begin{pmatrix} d_x^{(j)} \\ d_y^{(j)} \end{pmatrix} \mid h \in \mathbb{R} \right\}$. The spatial locations of $\mathbf{x}^{(i)}$ and $\mathbf{x}^{(j)}$ are expressed in polar coordinates with respect to $P^{(ij)}$, i.e., $\mathbf{x}^{(i)} = (r^{(i)}, \alpha^{(i)})$, and $\mathbf{x}^{(j)} = (r^{(j)}, \alpha^{(j)})$, where $r \in \mathbb{R}^+$ and $\alpha \in [-\pi, \pi]$. For simplicity, and without loss of generality, we assume $\alpha^{(i)} = 0$. A one-dimensional linear interpolation is then accomplished in $\mathbb{R}_+ \times [-\pi, \pi] \times \mathbb{R}^3$, between $\mathbf{v}^{(i)}$ and $\mathbf{v}^{(j)}$. In particular, for all $\lambda \in [0, 1]$, we define:

$$\mathbf{v}^{(ij)\lambda} := [\lambda r^{(j)} + (1 - \lambda)r^{(i)}, \lambda \alpha^{(j)}, \lambda \mathbf{d}^{(j)} + (1 - \lambda)\mathbf{d}^{(i)}].$$

In this way, we conjointly interpolate the location and the displacement vector. We set a number of discrete steps $n \in \mathbb{N}$, and hence, we define the family \mathbf{V}^{ij} including the vectors $\mathbf{v}^{(ij)t/n}$ for each t in $\{1, \dots, n\}$. These vectors are placed along the elliptic arc that links $\mathbf{x}^{(i)}$ and $\mathbf{x}^{(j)}$, and they are a convex combination of $\mathbf{d}^{(i)}$ and $\mathbf{d}^{(j)}$. Moreover, $\mathbf{v}^{(ij)0} = \mathbf{v}^{(i)}$, and $\mathbf{v}^{(ij)1} = \mathbf{v}^{(j)}$, so the original displacement vectors are included in \mathbf{V}^{ij} . We define the family \mathbf{V} of *discrete virtual displacements* as the union of the \mathbf{V}^{ij} for all (i, j) such that $E^{(ij)} \in E$.

- (C) **Cartesian Secondary Interpolation** We finally apply a two-dimensional interpolation on the virtual displacements \mathbf{V} , to fill the rest of the space $\mathbb{R}^2 \times \mathbb{R}^3$. Namely, we perform a linear interpolation without extrapolating the values outside the convex hull of \mathbf{V} . (We implemented the function *interp* in the software R.) Alternative methods formulated in Cartesian coordinates have been tested, and their results are not significantly different.

Figure 3c shows an example of the multipolar interpolation, considering the vectors $V_1 = (x_1, y_1, \mathbf{d}_1)$ and $V_2 = (x_2, y_2, \mathbf{d}_2)$. The spatial coordinates are (x_1, y_1) and (x_2, y_2) , and the azimuth angles are α_1 and α_2 , respectively. The n -interpolated vectors $(\mathbf{v}^{(1-2)1}, \dots, \mathbf{v}^{(1-2)n})$ are placed along the arc of circle centered in $P^{(ij)} = (C_{1-2})$, at the intersection of the prolongations of V_1 and V_2 . The corresponding azimuth angles $(\alpha_{(1-2)1:n})$ are equal to the n th part of the angle between the vectors V_1 and V_2 . Finally, the displacements $\mathbf{d}^{1-2 t/n}$ linearly interpolate those of V_1 and V_2 . The method provides $m \cdot n$ -interpolated vectors, where m is the number of edges in the graph.

4.2 Model validation and main sources of uncertainty

In order to quantitatively validate the RIM in an ideal case, we consider a synthetic ground deformation related to a spherical source in an elastic half-space, located at $(0, 0, -D)$ (Mogi model; Mogi 1958; McTigue 1987)

$$(d_x, d_y) = \alpha^3 \Delta P (1 - \nu) \mu^{-1} R^{-3}(x, y),$$

where $R^2 := x^2 + y^2 + D^2$, and with the following other properties:

- (1) depth of the center of the sphere from the surface ($D = 3000$ m);
- (2) radius of the sphere ($\alpha = 700$ m);
- (3) pressure change in the sphere ($\Delta P = 20$ MPa);
- (4) Young's modulus ($\mu = 10^{10}$) and Poisson's ratio ($\nu = 0.25$).

In Fig. 4a, we show the corresponding horizontal displacement map. Based on this, we randomly sample a number of uniformly distributed displacement values from this synthetic map, and we build a sequence of interpolation maps from these samples, based on 20, 15 and 10 of them. First, these data are linearly interpolated (Fig. 4b–d). Then, we use the new RIM method. In Fig. 5, we report a graph of consistent nodes (Fig. 5a, d, g), the virtual displacement vectors (Fig. 5b, e, h) and the interpolated map of RIM (Fig. 5c, f, i). The point densities vary greatly, and the virtual displacement vectors can cluster along the arcs between stations close-by. However, the Cartesian secondary interpolation produces a map on a regular grid and removes these differences. Finally, to quantify the accuracy of the methods, for every interpolated map M we calculate the misfit with respect to the original displacement map A . That is, the error ratio:

$$\text{Err} := \left[\frac{\sum_{ij} |M_{ij} - A_{ij}|}{\sum_{ij} |A_{ij}|} \right],$$

expressed as percentage. The values of (Err) are displayed in Figs. 4c, d and 5c, f, i, and RIM is associated with significantly lower Err values than in the linear interpolation. In summary, according to the chosen graphs of consistent nodes the new method performs better than a linear interpolation. This result is not depending on these particular graphs: Drawing all the possible arcs or linking the k -closest nodes also performs better than a linear interpolation.

It is important to emphasize that although the RIM can be applied to the vertical component of the ground deformation, it is always necessary to know the azimuths of horizontal components, because those define the elliptic arcs.

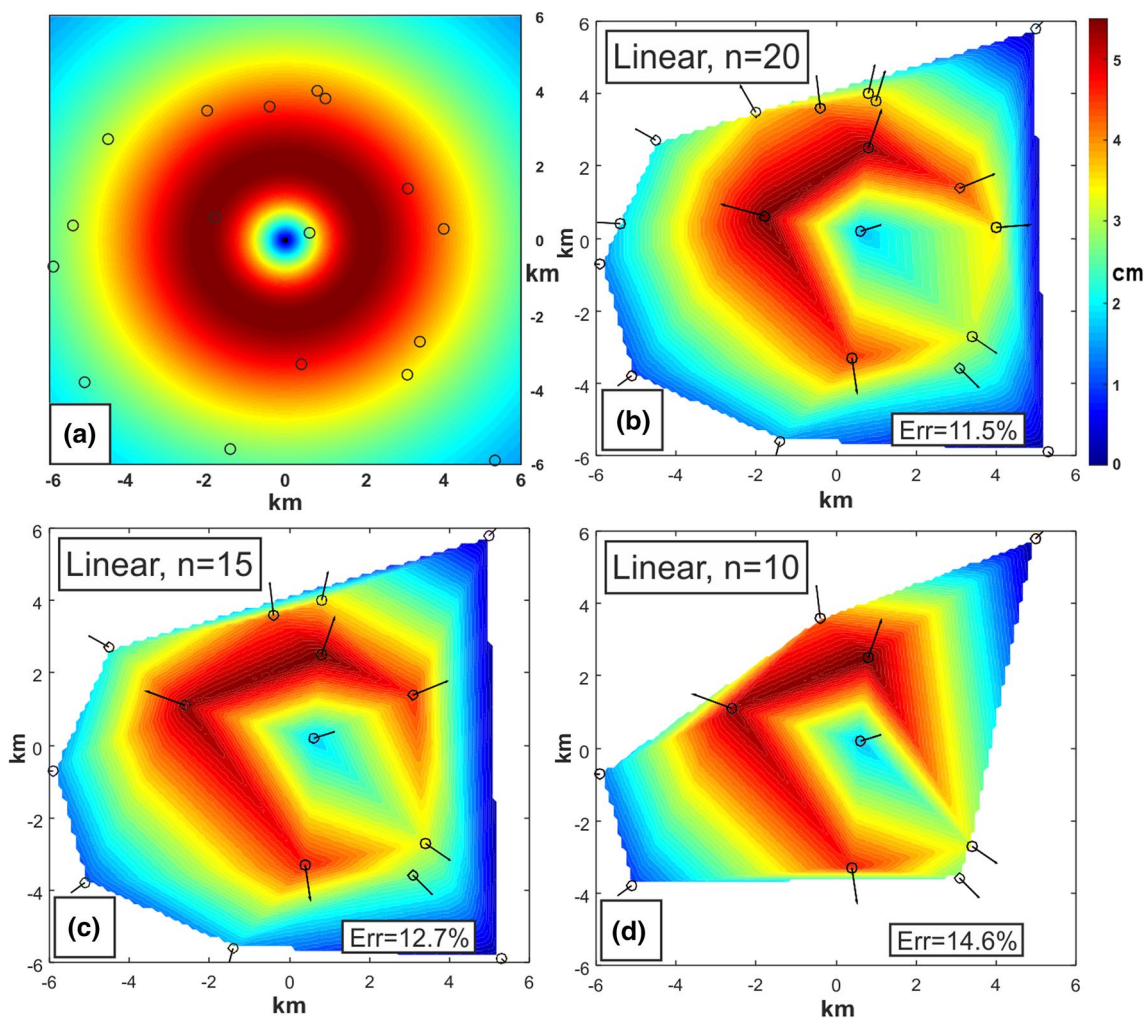


Fig. 4 Plot **a** shows the synthetic radial pattern of the horizontal displacement component obtained by Mogi model (see text for the explanation). Black dots are 20 randomly selected points. Plots **b–d** show linearly interpolated maps for a dataset of 20, 15 and 10 values, respectively

We remark that the results of the RIM are not equivalent to use an analytical source model. Indeed, our interpolation procedure is not aimed at accurately inferring the profile of the deformation along the radial direction better than a linear interpolation between the measured data. Instead, the key step of the RIM exploits the assumption of radial symmetry between each pair of measurements, operating along the direction orthogonal to the radii (see Fig. 3c, 5). Significantly, our results are independent of any specific geometry, location and physical properties of the source except for requiring a locally radial pattern, i.e., allowing multiple centers of symmetry. A global center of symmetry is not specified by the RIM, but a central region is approximated by the set of poles of symmetry $P^{(ij)}$.

The main sources of uncertainty affecting the RIM include:

1. The propagation of the measurement error on the original dataset;
2. The choice of the set of consistent nodes defining the elliptic arcs;
3. The modeling error related to the interpolation itself.

The effect of the first source of uncertainty is calculated with a Monte Carlo simulation. That the measurement error affecting the horizontal displacement can have nonlinear effects on the interpolated maps, because it affects the position of the poles of symmetry $P^{(ij)}$. We accomplished

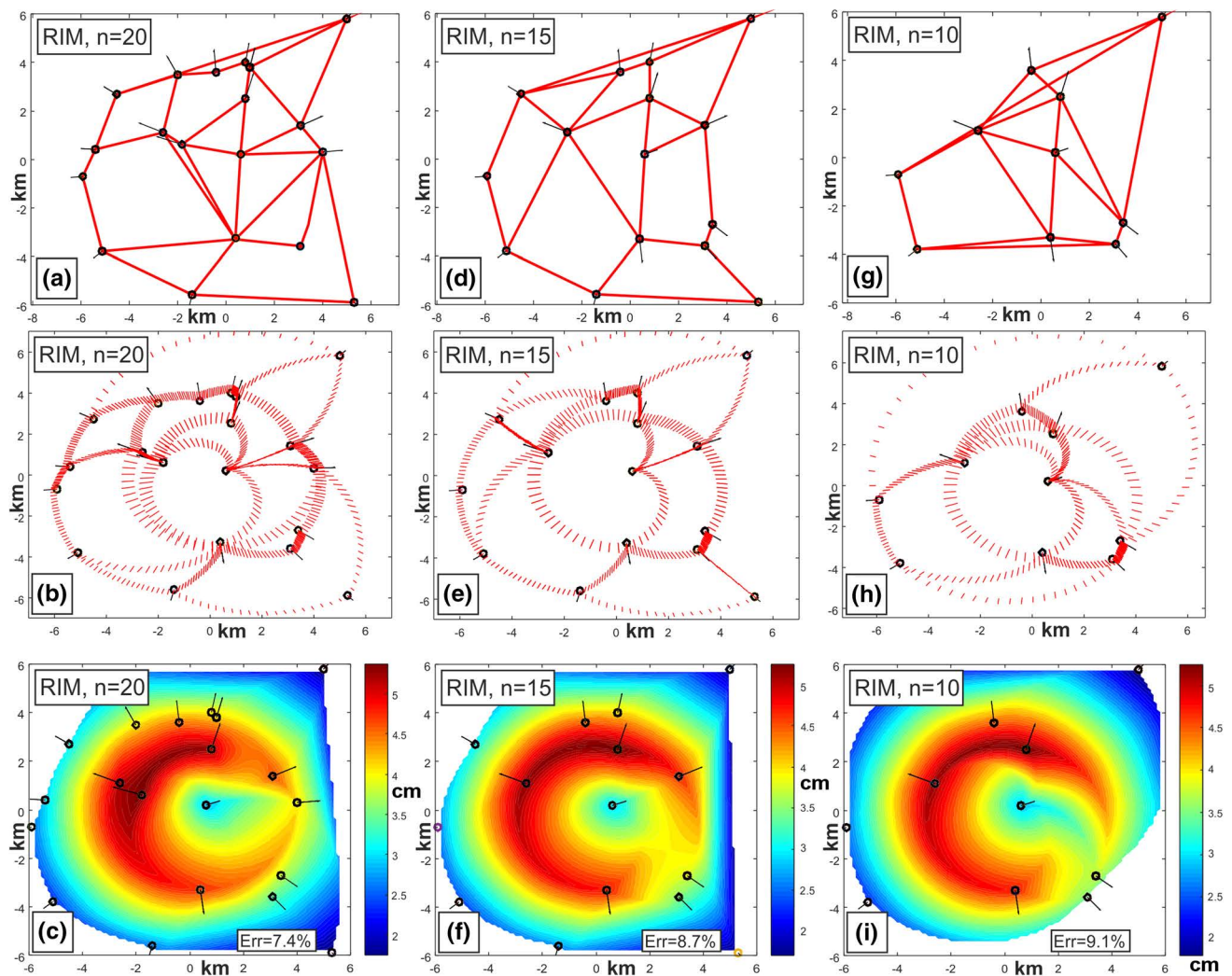


Fig. 5 Synthetic example of the RIM applied over a dataset of 20, 15 and 10 points. Plots **a**, **d**, **g** display the graph of consistent nodes. Plots **b**, **e**, **h** show the virtual points along the elliptic arcs. Plots **c**, **f**, **i** show the interpolated maps by using RIM, including the modeling error

uncertainty quantification on the Campi Flegrei examples, and the results are displayed and discussed in the following sections.

The second source of uncertainty is also explored with a sensitivity analysis made on the choice of the set of *consistent* nodes in the Campi Flegrei examples, and the results are attached in Supporting Information SI2. The definition of *consistent* nodes in the graph is essentially made to exclude sub-parallel horizontal displacements and to avoid elliptic arcs that overlap with clusters of other nodes. However, the comparison of Supporting Information SI2 to the figures in Sect. 5.1 showed that considering all the nodes and arcs is not producing a significant change in the results.

The third source of uncertainty, the modeling error, is quantified in the synthetic example shown in this section (see Figs. 4, 5). In a general case, modeling error can only be loosely constrained according to the differences between

measurements as a function of their spatial distance. If the radial symmetry breaks, then this error could be significantly large. The modeling error remains small if the assumption of radial symmetry is sufficiently robust, and the following analysis is conditional on that assumption.

5 Displacement maps using the Radial Interpolation Method

5.1 Examples based on GPS data

The first class of real examples that we describe are related to four minor uplift episodes that occurred in 2011–2013 in Campi Flegrei caldera. Figure 6 shows the horizontal and vertical displacements measured at 14 GPS stations of the monitoring network over that period. The time series

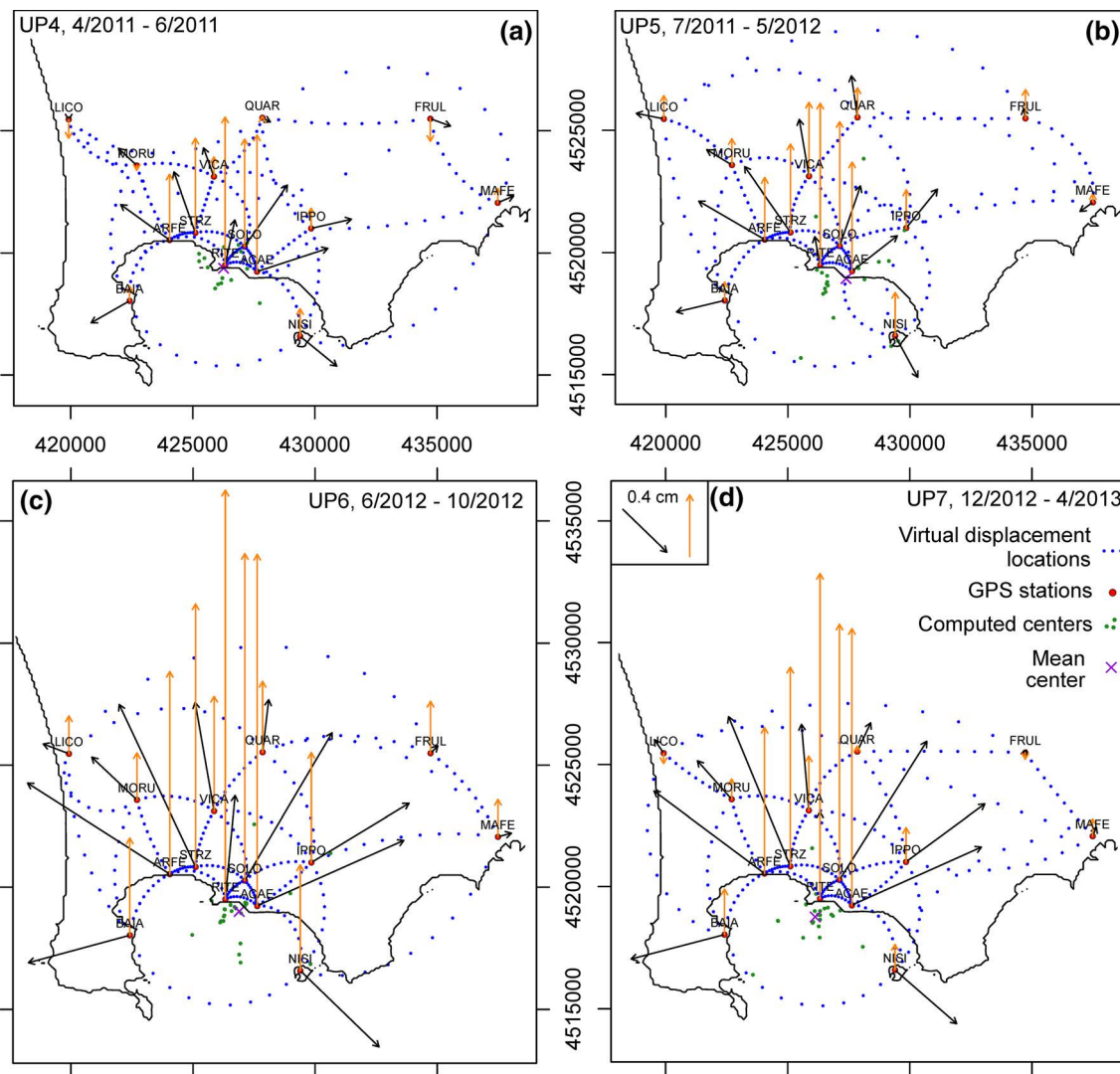


Fig. 6 Plots **a–d** display the average GPS measurements related to UP4–7. Black arrows are horizontal displacements, and orange arrows are vertical displacements. Red dots mark the GPS stations, with names displayed. Blue dots mark the RIM virtual displacement locations, along elliptic arcs. Green dots mark the RIM computed centers

for each pair of GPS stations considered (poles of symmetry). A purple cross marks the mean of the centers (excluding few outliers located further than 5 km from RITE station). UTM WGS84, Zone 33 N coordinate system (m)

of weekly displacements are reported in Supporting Information S11, from De Martino et al. 2014a. The episodes are: UP4 (April–June 2011), UP5 (July 2011–May 2012), UP6 (June–October 2012) and UP7 (December 2012–April 2013). The displacement data, including the standard errors (1σ), and the graph of consistent nodes are reported in Supporting Information S14. A sensitivity analysis on the choice of the graph of consistent nodes is reported in Supporting Information S12. The displacements and elliptic arcs in Fig. 6, as well as the computed centers for each pair of GPS stations considered (poles of symmetry), are related to the average displacements with respect to the measurement error. So, the elliptic arcs related to points characterized by smallest horizontal displacements are very uncertain, i.e.,

the small-sized virtual displacement vectors have unreliable locations and directions. In Supporting Information S14, we marked the stations in which the average measurement is lower than its standard error σ or than 2σ . The vertical deformations collected at the most distant GPS stations from the caldera center are not always significant. In particular, 9/15 stations in UP4, 8/15 stations in UP5, 2/15 stations in UP6 and 7/15 stations in UP7 did not collect measurements greater than 2σ . We remark that the RIM does not require to assume a unique center of symmetry since each pair of consistent nodes define their own pole of symmetry. Therefore, in Fig. 6, we show the mean location of these poles of symmetry, excluding from the computation few outliers located further than 5 km from RITE station that have a

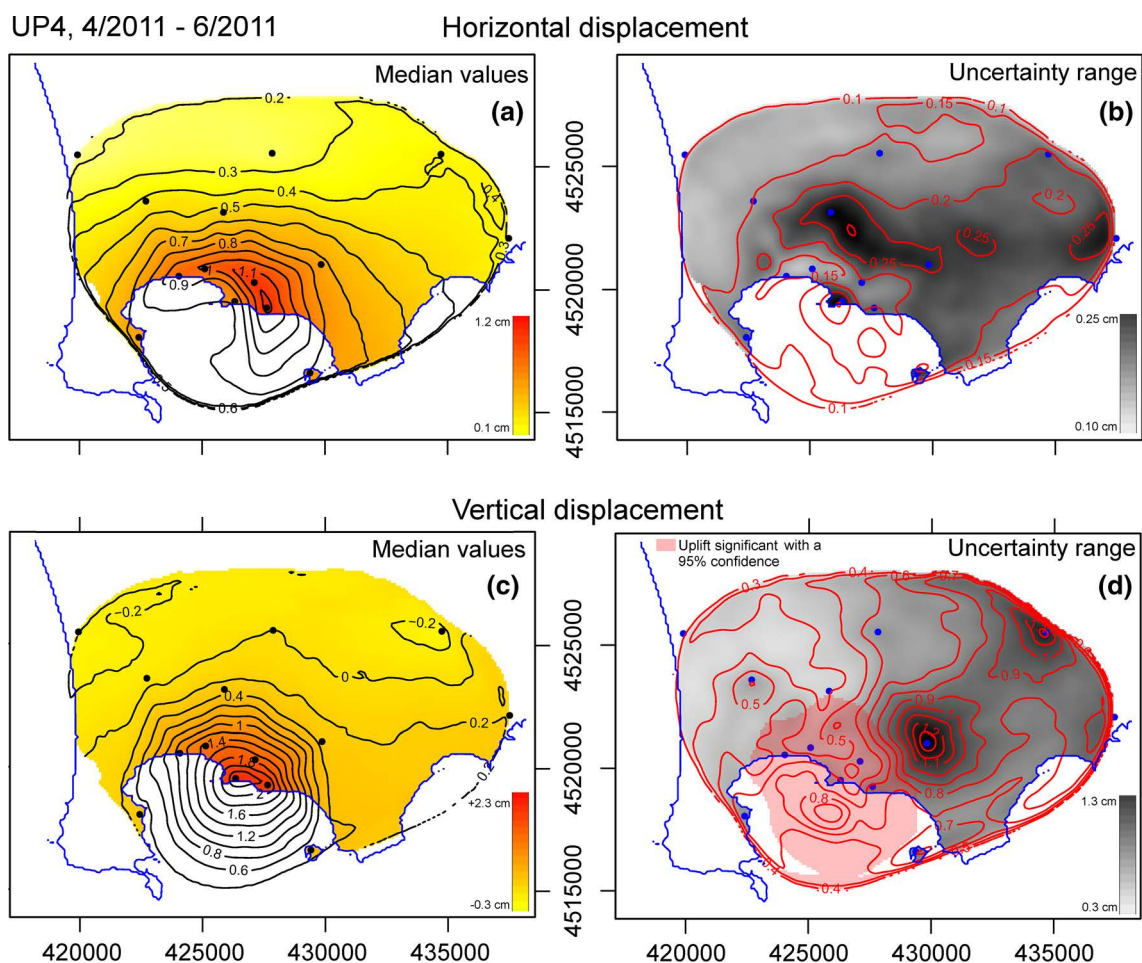


Fig. 7 Plots **a**, **c** show the RIM interpolated maps of horizontal (**a**) and vertical (**c**) displacement, based on UP4 GPS data. Colors and contours are related to displacement values, in cm. Plots **b**, **d** show the related uncertainty ranges. Gray values are related to displacement

uncertainty values, in cm. Red shaded colors in (**d**) mark the regions where the uplift was significant with a 95% confidence. UTM WGS84, Zone 33 N coordinate system (m)

small horizontal displacement strongly affected by measurement error.

Figures 7, 8, 9 and 10 show the interpolated maps of the GPS data for the uplift episodes according to our new method. All the GPS measurements in interval 2011–2013 are located inland, and hence, we are not considering the interpolated data in the Gulf of Pozzuoli, although the corresponding contour lines are also displayed. We also note that the RIM does not extrapolate the deformation outside the convex hull of the elliptic arcs that link the measurement sites. We performed a Monte Carlo simulation of 250 samples varying the observations, considering the measurement error as a source of uncertainty; increasing the number of samples does not significantly affect the result. All the figures include two pairs of plots, expressing displacement values at each location (x, y) on a rectangular grid of 250 m cell size. Plots (a–b) show the horizontal displacement, and plots (c–d) show the vertical displacement. The first plot of

each pair shows the median values of displacement $M(x, y) = 50\text{th percentile}(x, y)$; the second plot shows the uncertainty range U that we define as: $U(x, y) = [95\text{th percentile}(x, y) - 5\text{th percentile}(x, y)]/2$. The interpolated maps of upper and lower uncertainty percentiles are included in Supporting Information S13.

In summary, the median values of horizontal displacement are in the range [0.1, 1.2] cm for UP4 and UP5, while they are in [0.1, 2.8] cm for UP6 and UP7. The pattern is consistent with the well-known dome-shaped geometry, with maximum of median horizontal displacement always located in a semi-annular region in the central area of the caldera, at 2–3 km from Pozzuoli. During UP4, the peak displacement is located in the center-east area of the caldera (close to ACAE and SOLO stations), for UP5 it is on the center-west area (ARFE and STRZ), and for UP6 and UP7 it progressively moves back to the center-east area (near STRZ and then SOLO stations). Uncertainty range is in [0.1, 0.25]

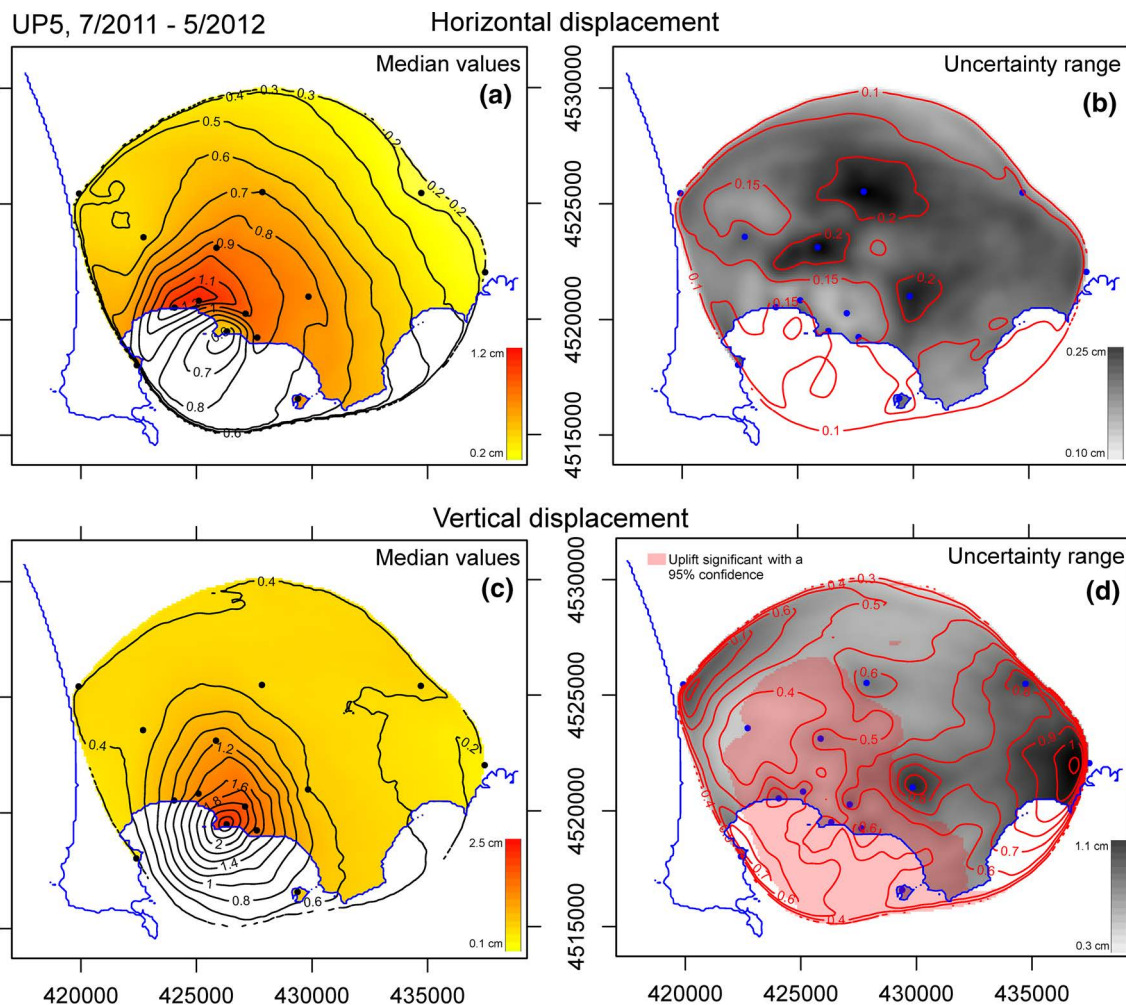


Fig. 8 Plots **a**, **c** show the RIM interpolated maps of horizontal (**a**) and vertical (**c**) displacement, based on UP5 GPS data. Colors and contours are related to displacement values, in cm. Plots **b**, **d** show the related uncertainty ranges. Gray values and contours are related

to displacement uncertainty values, in cm. Red shaded colors in (**d**) mark the regions where the uplift was significant with a 95% confidence. UTM WGS84, Zone 33 N coordinate system (m)

cm for UP4 and UP5, while it is in [0.1, 0.4] cm for UP6 and UP7. These values are not large enough to significantly affect the pattern described above. Most uncertain regions for UP4 and UP5 are located close to the stations that reported least precise measurements. Instead, for UP6 and UP7 the uncertainty peaks are located in regions far from the measurement stations and related to the uncertainty affecting the elliptic arc placement. However, in the four uplifts the median values of the horizontal deformation are larger than their uncertainties in almost the entire region considered, and the deformation is significant with a 95% confidence.

Vertical displacement for UP4 and UP5 is characterized by elliptical isolines with WNW-ESE and NNE-SSW long axis directions, respectively. Instead, for UP6 and UP7 the vertical displacement shows more circular isolines. The median values are in the range [− 0.3, + 2.3] cm for

UP4, in [+ 0.1, + 2.5] cm for UP5, in [+ 0.5, + 6.5] for UP6 and in [− 0.2, + 5.0] for UP7. Maximum values are always close to RITE station, although in UP4 the peak displacement affects also the ACAE station. Uncertainty is in the range [0.3, 1.3] cm for all episodes, with peak values located either near some stations (mostly for U4 and U5) or far from stations (U6 and U7). In Figs. 7, 8, 9 and 10, we marked in red the regions where the vertical displacement was significant with a 95% confidence. In UP6, the interpolated vertical deformation field is significant in almost the whole region. Instead, in UP4, UP5 and UP7, in some of the most distant regions from the caldera center the uncertainty is larger than the median values obtained, and the vertical deformation is not significant with a 95% confidence.

In the future analysis, the same procedure could be adopted to compare either vertical or horizontal velocities

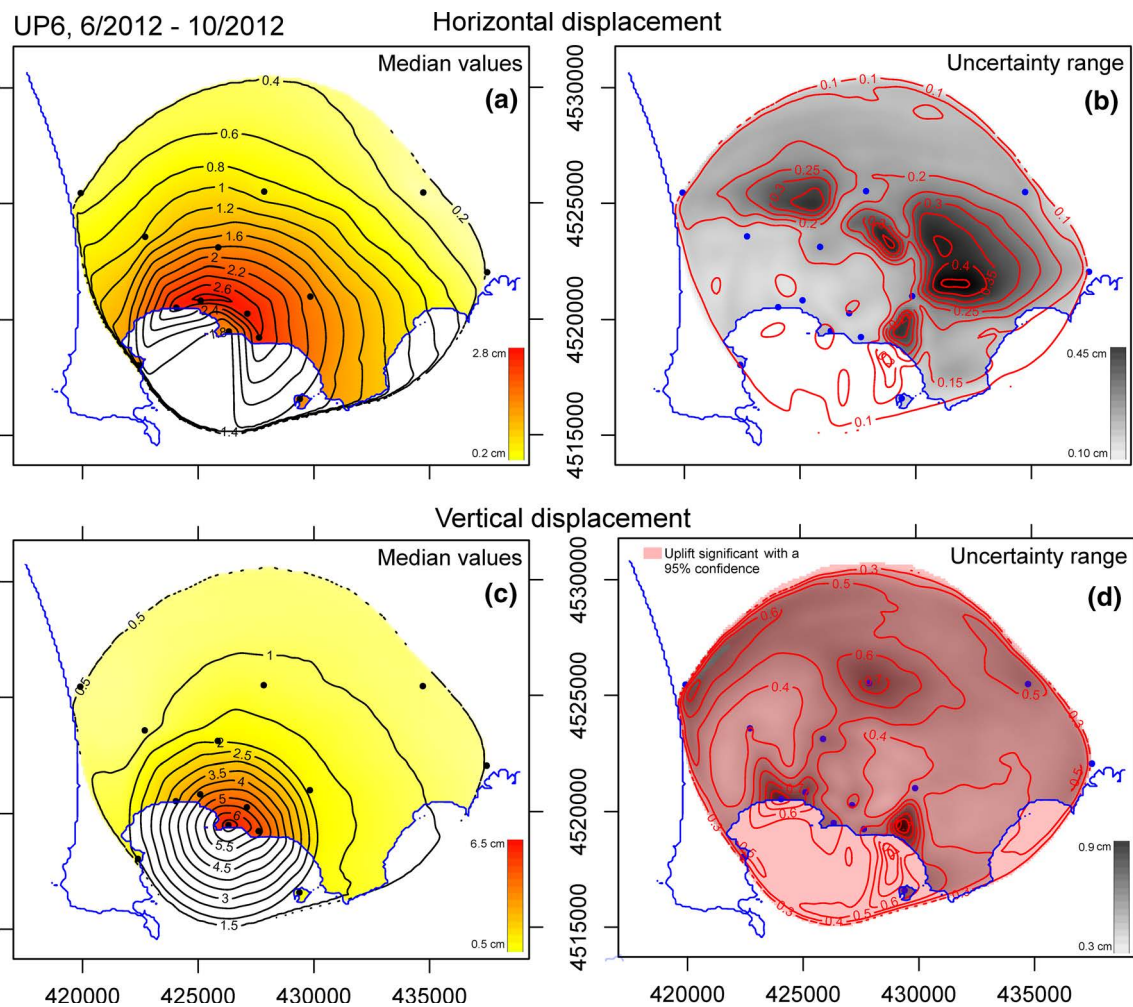


Fig. 9 Plots **a**, **c** show the RIM interpolated maps of horizontal (**a**) and vertical (**c**) displacement, based on UP6 GPS data. Colors and contours are related to displacement values, in cm. Plots **b**, **d** show the related uncertainty ranges. Gray values and contours are related

to displacement uncertainty values, in cm. Red shaded colors in (**d**) mark the regions where the uplift was significant with a 95% confidence. UTM WGS84, Zone 33 N coordinate system (m)

over different time periods—indeed the displacements may vary pending on event duration, where the velocities could be more comparable. Moreover, vertical and horizontal displacements could be reconciled and used for volcano monitoring purposes, for example analyzing the 3D displacement field.

5.2 Examples based on leveling and Geodetic Precise Traversing data

The second class of real examples that we describe are related to the leveling and GPT data collected during the bradyseismic crisis of 1980–1985 and the subsequent phase of subsidence. We considered three time periods: 1980–1983, 1983–1984 and 1985–1988. The leveling data are based on a much larger number of measurements than the GPS data, but they refer to benchmarks that lie only

on localized paths, leaving large areas uncovered. Moreover, leveling data do not provide horizontal deformation. The poles of symmetry are obtained from the processing of the horizontal displacement, and only the GPT data of 1983–1984 enable their calculation. Uncertainty analysis is not performed for these examples due to the lack of information available to us on the measurement error of GPT and leveling campaigns. The displacement values are expressed again on a rectangular grid of 250 m cell size.

Figure 11a displays the horizontal displacements measured in 14 GPT stations. The displacement data and the graph of consistent nodes are reported in Supporting Information S15. In Fig. 11a, we also show the mean location of the poles of symmetry, excluding few outliers located further than 5 km from RITE station. This mean center is located at 426481E, 4518885 N. The RIM was applied on

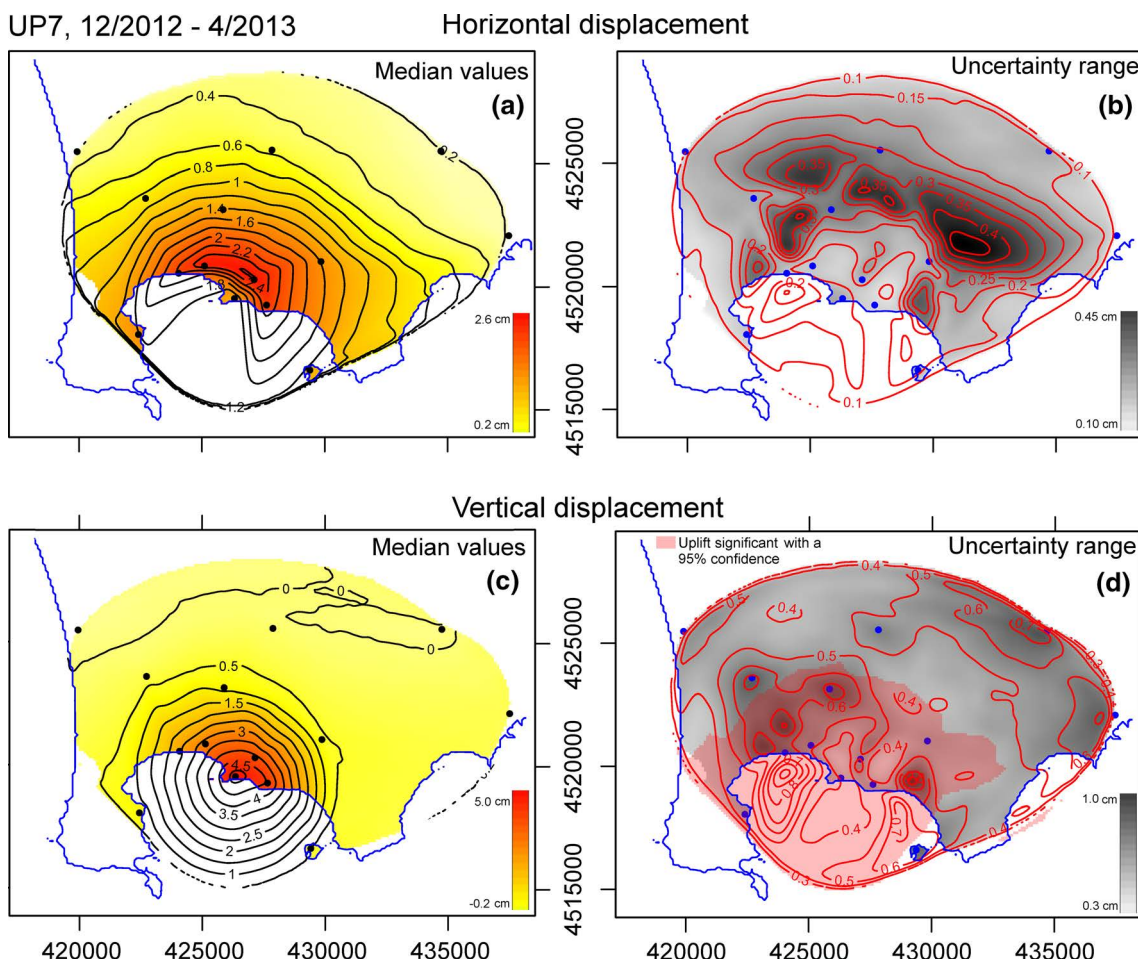


Fig. 10 Plots **a**, **c** show the RIM interpolated maps of horizontal (**a**) and vertical (**c**) displacement, based on UP7 GPS data. Gray values and contours are related to displacement values, in cm. Plots **b**, **d** show the related uncertainty ranges. Colors and contours are related

to displacement uncertainty values, in cm. Red shaded colors in (**d**) mark the regions where the uplift was significant with a 95% confidence. UTM WGS84, Zone 33 N coordinate system (m)

all leveling data by implementing this location as a global center of symmetry.

Figure 11b–d displays the vertical displacements measured along the leveling network of the considered periods. The network was significantly extended in 1983, with the setup of additional leveling paths (station labels 52–82). To improve clarity, some displacement vectors are not reported, and some leveling stations are not labeled in the figure. However, the displacement data collected in all the stations, and the graph of consistent nodes, are fully reported in Supporting Information SI6. This dataset also includes the periods of subsidence in 1989–1992 and 1995–2000, not detailed in this section, but considered in the next section for the depiction of the deformation boundary and for the calculation of volume variation of the ground.

Figure 12 shows the interpolated maps of the GPT and leveling data according to our new method. In summary, the horizontal displacement measured in 1983–1984 is in

the range [12, 34] cm. The GPT stations were all placed in the central part of the caldera, and the data outside of this region are not available. However, the pattern is still consistent with a dome-shaped geometry, with maximum horizontal displacement again located in a semi-annular region in the central area of the caldera, at 2–3 km from the town of Pozzuoli. The peak displacement is located in the center-west area of the caldera (close to the nowadays called ARFE station). This is similar to what observed in UP5, but the displacement scale is an order of magnitude larger.

Vertical displacement shows approximately circular isolines. The values are in the range [0, 60] cm for 1983–1984, in [0, 110] cm for 1983–1984 and in [–45, 0] cm for 1985–1988. Maximum absolute values are again close to the nowadays called RITE station, both in uplift and subsidence phases.

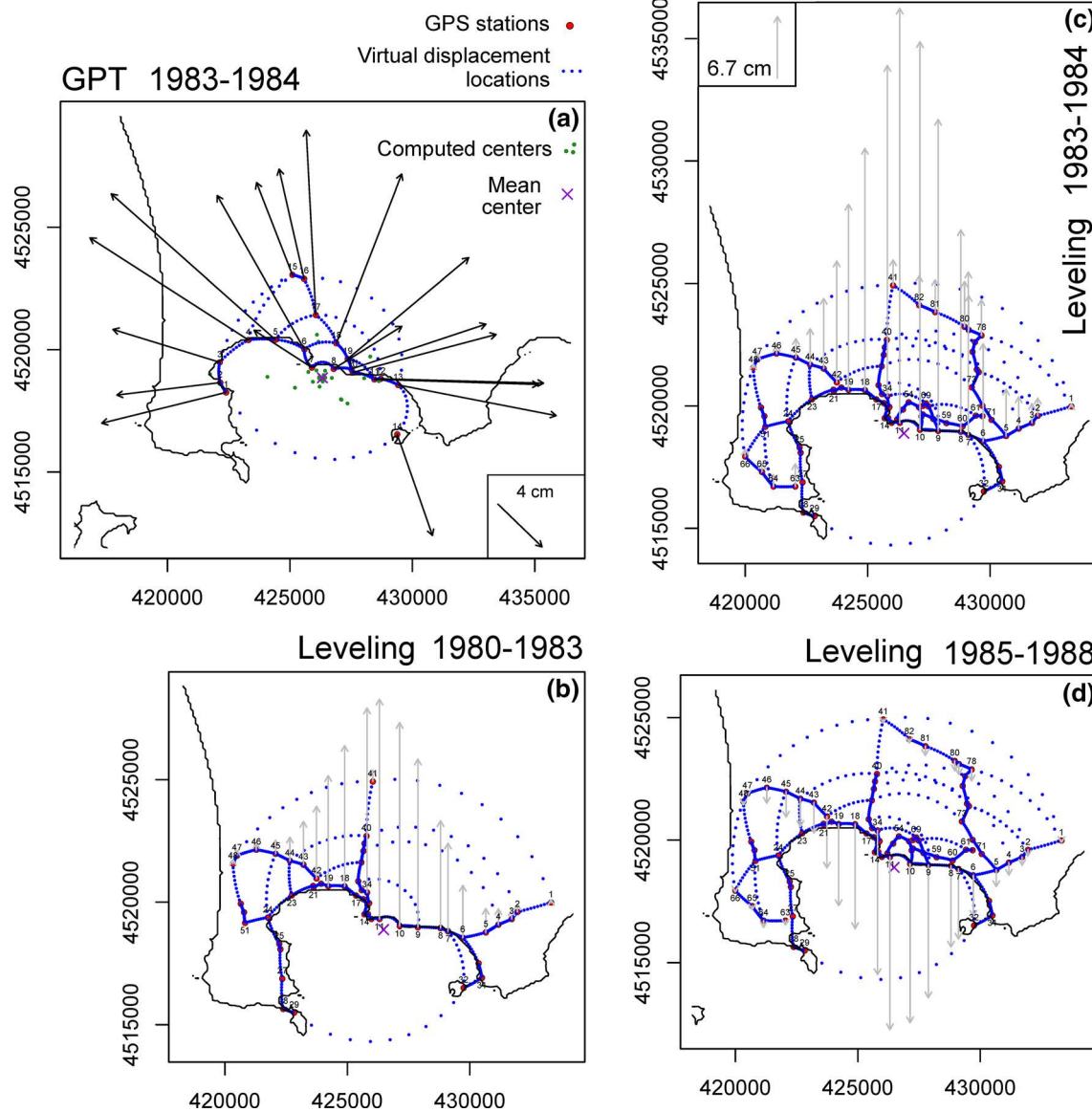


Fig. 11 Plot **a** displays the GPT measurements related to 1983–1984. Black arrows show the horizontal displacements. Green dots mark the RIM computed centers for each pair of stations considered (poles of symmetry). A purple cross marks the mean of those centers. Plots **b–d** display the leveling measurements related to 1980–1983 (**b**), 1983–

1984 (**c**), 1985–1988 (**d**). Gray arrows show the vertical displacements. Red dots mark the leveling stations, with some label numbers displayed. Blue dots mark the RIM virtual displacement locations, along elliptic arcs. UTM WGS84, Zone 33 N coordinate system (m)

6 Deformation boundaries

In this section, we further analyze the interpolated maps. We provide a quantification of the region affected by significant horizontal or vertical deformation, with the purpose to compare it to the past vent locations. In Fig. 13a, we mark the region of maximum horizontal displacement, as obtained from the GPS and GPT data. These lines only have a descriptive

purpose and simply connect the points of maximum displacement observed over each radial line with respect to the approximate center of vertical displacements. Similarly, we also draw the external boundaries of vertical displacements, marking significant changes in the slope of the maps. We note that the eruptive vents of the last 5.2 kyr BP (i.e., Epoch III and Monte Nuovo eruption, with spatial uncertainty described in Bevilacqua et al. 2015; Bevilacqua 2016) are all close to these lines or inside the annular region between them. A further analysis of the relation of vent opening and deformation could have important implications for hazard assessment. Indeed, the

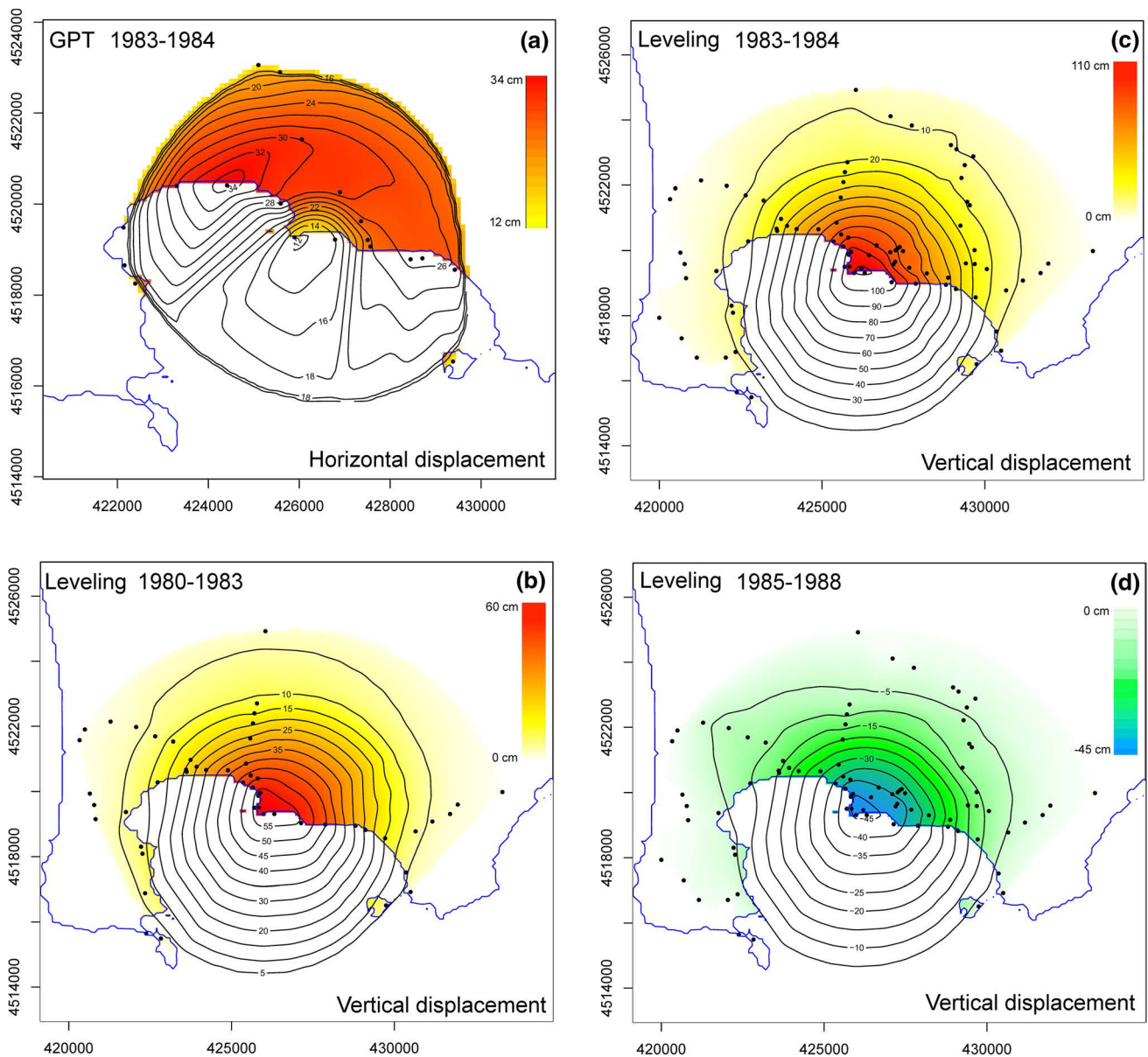


Fig. 12 Plots **a–d** show the RIM interpolated maps of horizontal (**a**) and vertical (**b–d**) displacement based on GPT and leveling data, respectively. Colors and contours are related to displacement values. UTM WGS84, Zone 33 N coordinate system (m)

3D deformation field can help to constrain the expected radial distance of eruptive vents from the center of the caldera, and large values of horizontal deformation can be used as a spatial precursor to future vent opening (see Bevilacqua et al. 2015, 2017; Rivalta et al. 2019; Patra et al. 2019).

7 Estimation of the volume variation of the ground

The interpolated maps of the vertical displacement allow us to evaluate the volume variation of the ground (ΔV) during the major bradyseismic episodes (either of uplift or subsidence). This quantity only estimates the ground deformation without considering any dependence on any specific source geometry, physical properties and location except for requiring a locally radial pattern. However, the volume variation of the ground may or, often, may not correspond to the volume variation of the source, depending on its unknown geometry

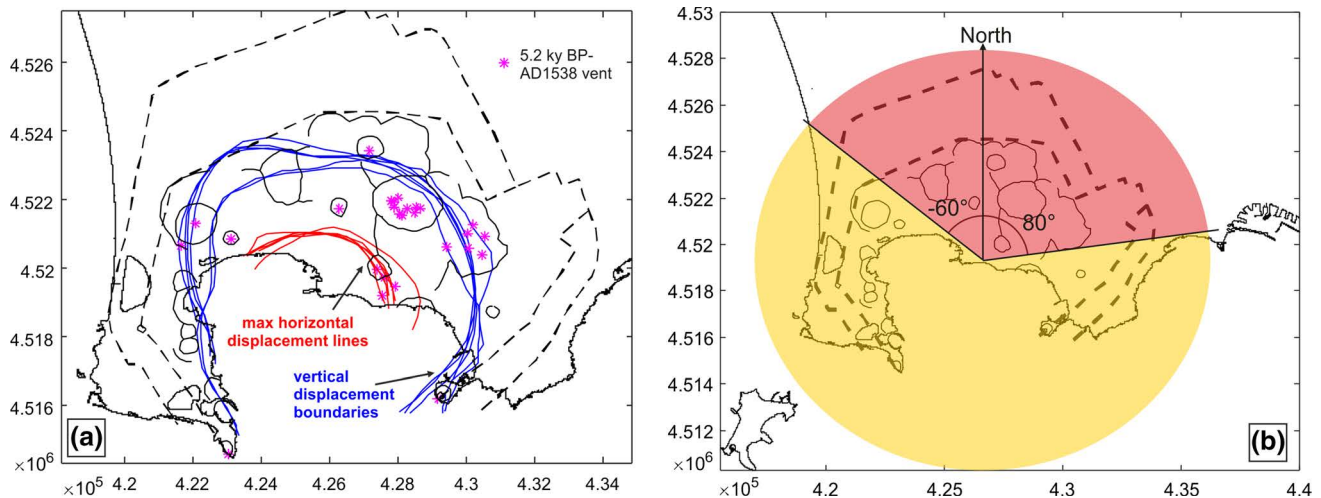


Fig. 13 **a** Map showing vertical displacement boundaries and max horizontal displacement lines as resulting from the RIM maps above presented. Spatial markers of past vents locations occurred in the last 5.2 ky BP are reported as pink stars. Dashed lines mark the caldera

boundaries (Vitale and Isaia 2014). **b** Area (in red) where the ΔV was calculated according to the methods $\Delta V3$ and $\Delta V4$ (see text for details). UTM WGS84, Zone 33 N coordinate system (m)

and physics (Davis 1986; Delaney and McTigue 1994; Fialko et al. 2001; Gottsmann et al. 2006; Rivalta and Segall 2008; Amoroso and Crescentini 2011; Macedonio et al. 2014). For example, in Berrino et al. (1984) and Dvorak and Berrino (1991), the volume variation of the ground in 1980–1984 is about half of the inferred volume variation of the source, mainly because their analytical models include a significant deformation below the source. In contrast, the volume variation of the source during the minor uplifts of 2012–2013 in D’Auria et al. (2015) and Giudicepietro et al. (2017) is consistent with volume variation of the ground because their analytical model neglects any possible elastic deformation occurring below the source (Macedonio et al. 2014; Giudicepietro et al. 2016). We remark that, in general, the proportionality between the volume changes at the source and at the surface is dependent upon many factors, such as the elastic parameters and the depth of the source (e.g., Lisowski 2006).

In general, we calculate ΔV as the sum of the sub-volumes resulting from the product of the cell areas of the interpolated maps with the corresponding displacement value. This approximates the integral sum of the vertical displacement over the considered area. This integral sum is not significantly affected by cancelation of sub-volumes having opposite sign. Only in the case of UP4, the volume variation combines a possible small subsidence far from the center of the caldera and a larger uplift in the central part (see Fig. 7c, d).

We compare four ways of estimating ΔV for each of the studied episodes. The different approaches help to quantify the uncertainty related to the submerged sector of the caldera and to the large distal regions affected by a relatively small

uplift. We obtain a first volume difference estimation (named $\Delta V1$) by integrating the vertical displacement over the entire map, that is, the convex hull of all the RIM elliptic arcs. A second estimation (named $\Delta V2$) is based on the integral sum over a circle of 6 km radius from the averaged center of symmetry (see Figs. 6, 11a). This circle is consistent with the vertical displacement boundary in Fig. 13. Moreover, in UP4, UP5 and UP7, this excludes the regions in which vertical deformation is not significant with a 95% confidence. Then, we obtain a third estimation (named $\Delta V3$) by calculating the volume in a circular sector approximately representing the northern side of Campi Flegrei caldera, where the density of measurements is higher (Fig. 13b), and assuming the same average volume/angle ratio over 360° . In particular, to obtain the total ΔV we multiply the resulting volume for $360^\circ/140^\circ$. In substance, we are estimating the proportion of the ΔV that is captured by the GPS network onland and we use this to estimate the full ΔV . The center of this circular sector is the average center of symmetry calculated with the RIM, whereas the western and eastern boundary lines are defined by -60° and 80° azimuth values (with a total angle of 140° , see Fig. 13b). The estimation $\Delta V3$ does not rely on the interpolation of the vertical deformation occurred underwater, far from any GPS/leveling station before the recent placement of the GPS buoys (De Martino et al. 2014b; Iannaccone et al. 2018). Finally, a fourth estimation (named $\Delta V4$) considers the portion of this circular sector that is less than 6 km from the center.

Hence, for all the RIM maps described in the previous sections, we obtain four volume estimates reported in Table 1(A). Considering the leveling data, the volume variations $\Delta V3$ and $\Delta V4$ calculated on the northern circular

Table 1 Volume variation of the ground obtained by the integral sum of vertical displacement

Tool	Time interval	Duration	Event	$\Delta V1$ (Mm ³)	$\Delta V2$ (Mm ³)	$\Delta V3$ (Mm ³)	$\Delta V4$ (Mm ³)	Δh_{\max} (cm)
(A) Volume variation of the ground obtained from the RIM								
Leveling	1980–1983	3 years	Uplift	16.7	16.5	19.3	18.5	59.9
Leveling	1983–1984	2 years	Uplift	29.7	29.4	33.4	32.7	112.5
Leveling	1985–1988	3 years	Subsidence	−12.2	−12.1	−13.8	−13.6	−47.0
Leveling	1989–1992	3 years	Subsidence	−5.6	−5.6	−6.5	−6.4	−20.8
Leveling	1995–2000	5 years	Subsidence	−5.3	−5.2	−5.9	−5.7	−19.0
GPS	4/2011–6/2011 (UP4)	3 months	Uplift	0.5±0.5	0.5±0.3	0.4±0.9	0.5±0.4	2.4±0.4
GPS	7/2011–5/2012 (UP5)	10 months	Uplift	1.2±0.6	0.8±0.3	2.0±1.0	1.1±0.4	2.6±0.4
GPS	6/2012–10/2012 (UP6)	5 months	Uplift	3.1±0.5	2.3±0.2	4.7±1.1	2.7±0.2	6.9±0.4
GPS	12/2012–4/2013 (UP7)	4 months	Uplift	1.4±0.3	1.3±0.2	2.0±0.7	1.7±0.3	5.3±0.3
Tool	Time interval	Duration	Event	$\Delta V3$ (Mm ³) InSAR	$\Delta V3$ (Mm ³) LSQ	$\Delta V4$ (Mm ³) InSAR	$\Delta V4$ (Mm ³) LSQ	Δh_{\max} (cm)
(B) Volume variation obtained from InSAR acquisitions								
InSAR	11/2004–1/2007	27 months	Uplift	1.3*	2.0±0.8	1.4*	1.6±0.4	4.8
InSAR	2/2007–12/2007	11 months	Subsidence	−0.1*	0.0±0.7	−0.4*	−0.4±0.3	−1.9
Tool	Time interval	Duration	Event	$\Delta V1$ (Mm ³)	$\Delta V2$ (Mm ³)	$\Delta V3$ (Mm ³)	$\Delta V4$ (Mm ³)	Δh_{\max} (cm)
(C) Statistical inference of volume variation obtained from least square fit								
–	1950–1952	2 years	Uplift	21.0±0.9	20.7±0.6	24.0±1.8	23.2±1.0	78.0**
–	1968–1972	4 years	Uplift	47.6±1.7	47.0±1.0	54.0±3.2	52.7±1.7	177.9**
–	2005–2018	13 years	Uplift	12.7±0.7	12.7±0.5	14.9±1.4	14.3±0.7	47.0***

$\Delta V1$ considers the envelope of all RIM elliptic arcs, $\Delta V2$ is the sum over a circle of 6 km radius from the averaged center of symmetry (see Fig. 6.11a), $\Delta V3$ is based on the vertical displacement over a 140° circular sector on the northern side of Campi Flegrei caldera, multiplied by 360°/140°, and $\Delta V4$ considers the portion of this circular sector that is less than 6 km from the center. Δh_{\max} is the maximum measured vertical displacement. The field of vertical displacement is obtained in (A) from the RIM; in (B) from InSAR acquisitions compared with least square fit (LSQ); and in (C) from least square fit only. Uncertainty range is based on 5th and 95th percentile values ($\sim 2\sigma$)

*InSAR processing method is detailed in “Appendix A”

**Data from Del Gaudio et al. (2010) referring to the Δh estimated for the Serapeo floor (Pozzuoli town)

***Data from the INGV periodic bulletin of Campi Flegrei (<http://www.ov.ingv.it/ov/it/campi-flegrei/275.html>)

sector are in general 12–15% larger than $\Delta V1$ and $\Delta V2$, respectively. Instead, the volume variations $\Delta V2$ and $\Delta V4$ in the circle of 6 km radius from the average center are slightly smaller than $\Delta V1$ and $\Delta V3$ (by about 2%). The volume changes based on GPS data include the effects of measurements errors. We assumed Gaussian errors and independence between the values randomly sampled at different stations. Under these assumptions, even if the vertical displacements are not always significant locally, the volume change is significant at 95% confidence, except for $\Delta V1$ and $\Delta V3$ in UP4. In particular, considering the mean values of the volume variation, UP4 shows a possible subsidence in the outer and northern part of the considered region, and this produces a 20% decrease from $\Delta V1$ to $\Delta V3$ and a 25% increase from $\Delta V3$ to $\Delta V4$. UP5 and UP6 are characterized by a wider region of uplift than other cases study, and this produces a 30% decrease from $\Delta V1$ to $\Delta V2$ and about 45% from $\Delta V3$ to $\Delta V4$. Moreover, $\Delta V3$ and $\Delta V4$ are about 50–60% larger than $\Delta V1$ and

$\Delta V2$, respectively. Also UP7 shows $\Delta V3$ and $\Delta V4$ that are about 30–40% larger than $\Delta V1$ and $\Delta V2$. In general, the uncertainty reduces if the analysis is performed in the circle of 6 km radius from the average center, while the uncertainty increases if the analysis is performed on the northern circular sector.

We look at the changes in ΔV versus Δh_{\max} as a way to assess variations in source geometry and depth. If plotted against the maximum vertical displacement measured Δh_{\max} , approximated with the value measured at the RITE station, the volume variation data are significantly aligned, and Fig. 14 shows the linear regression least square fit:

$$\Delta V = V0 + K\Delta h_{\max}, \quad (1)$$

where the coefficients $V0$ and K are reported in figure and depend on the volume estimate considered $\Delta V1$ –4. In particular, K is about 0.26–0.27 $\times 10^6$ m³/cm if based on $\Delta V1$ and $\Delta V2$, while it is 0.29–0.31 $\times 10^6$ m³/cm if based on $\Delta V3$ and $\Delta V4$; the mean value of $V0$ is about 0.2 $\times 10^6$ m³ if

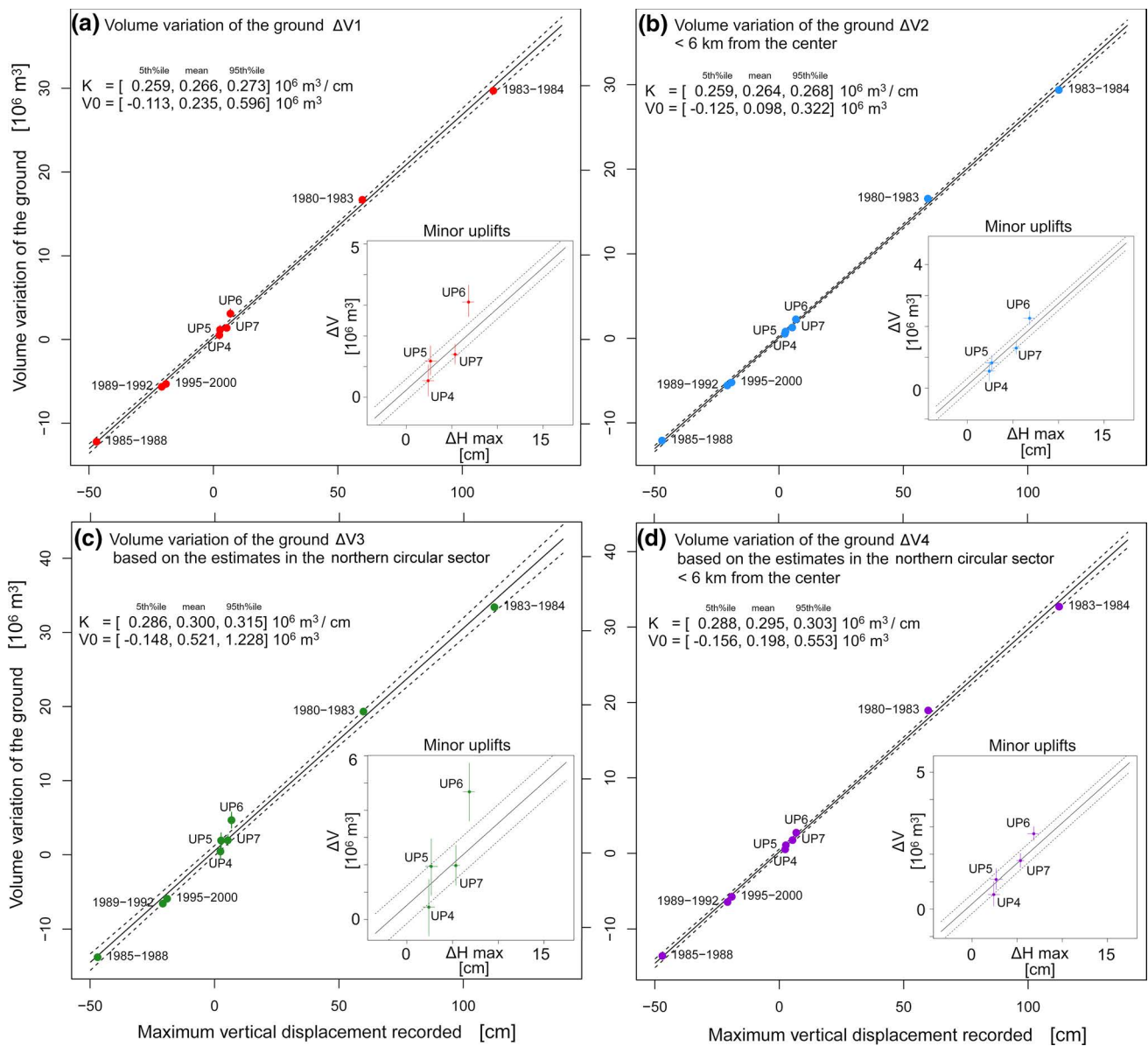


Fig. 14 Least square linear regression of the volume variation ΔV of the ground and the maximum vertical displacement recorded Δh_{\max} . Dashed lines are 5th and 95th percentiles related to the measurement error on Δh_{\max} and the RIM uncertainty on ΔV when available, and to the confidence interval of the least square fit $\Delta V = V_0 + K \Delta h_{\max}$. A small box displays a zoom on the minor uplifts UP4-7 and shows uncertainty ranges on Δh_{\max} and ΔV . In plot **a** ΔV_1 considers the envelope of all RIM virtual points, in plot **b** ΔV_2 is obtained on a

circle with 6 km radius from the averaged center of symmetry (see Fig. 6, 11a), in plot **c** ΔV_3 is based on the vertical displacement over a 140° circular sector on the northern side of Campi Flegrei caldera multiplied by $360^\circ/140^\circ$, and in plot **d** ΔV_4 considers the portion of this circular sector than is less than 6 km from the center. All the plots show the mean value and the uncertainty range of the coefficients K and V_0

based on ΔV_1 and ΔV_4 , while it is $0.5 \times 10^6 \text{ m}^3$ if based on ΔV_3 and $0.1 \times 10^6 \text{ m}^3$ if based on ΔV_2 . The substantial proportionality of ΔV and Δh_{\max} suggests that, apparently, the geometry and position of the volcanic source did not change with time (e.g., Amoruso et al. 2014a, b). Also, it suggests that the elastic mechanical behavior of rock did not change during the whole period considered. The value of Δh_{\max} in UP6 is not well explained by the linear regression if based

on ΔV_1 and ΔV_3 , that is, the calculated volume variation is larger than what the linear model would predict.

According to a data processing of InSAR measurements detailed in “Appendix A,” related to the ENVISAT SAR acquisitions on ascending (track 129, frame 809) and descending (track 36, frame 2781) orbits, we also calculated the volume variation of the ground during two minor uplift and subsidence events occurred in the period

11/2004–12/2007. These InSAR measurements are limited to the inland sector, so we produced volume variations with the methods $\Delta V3$ and $\Delta V4$. We report them in Table 1(B), and we compare them with the statistical inference in Eq. (1). We always approximated the Δh_{\max} by using the value measured at the RITE station. In this case, the value is closer to the maximum uplift in the InSAR data than the measurement error. Both the estimates of $\Delta V3$ and $\Delta V4$ are statistically consistent with the linear model, especially $\Delta V4$, which does not include noisy data in the outer portion of the region.

Thanks to Eq. (1), we finally estimated the volume variation of the ground also for the uplifts in the periods 1950–1952, 1968–1972 ($\Delta h_{\max} = 74$ cm and 177.9 cm, measured on Serapeo floor in Pozzuoli town; Del Gaudio et al. 2010) and 2005–2018 ($\Delta h_{\max} = 47$ cm, measured at the RITE station according to the INGV periodic bulletins of Campi Flegrei; <http://www.ov.ingv.it/ov/it/campi-flegrei/275.html>). We report them in Table 1(C). Under the assumption of this least square fit, the full time series of volume variation could be inferred from the time series of vertical uplift reported in Fig. 1b. The total volume variation $\Delta V4$ corresponding to the historical maximum $\Delta h_{\max} = 380$ cm measured in 1985 from the minimum of 1950 is equal to $[112 \pm 3] \times 10^6 \text{ m}^3$.

8 Discussion

The presented interpolation method (RIM) allowed a detailed analysis of the spatially sparse data of ground deformation obtained from GPS, GPT and leveling measurements. In particular, RIM was applied to investigate the ground deformation patterns in the volcanic area of Campi Flegrei during the last 39 years. The resulting RIM maps of vertical and horizontal displacement components represent a useful tool to better understand the ground deformation history of this area, particularly before 1992 when space-borne remote sensing data were not available. The new method has also promising applications for retrospective studies in other caldera systems, especially in the context of counterfactual analysis of historical unrests, i.e., the stochastic modeling of past crises at the particular volcano of concern that had the potential for a dangerous event but did not ultimately result in a significant eruption (Selva et al. 2012, 2015; Hincks et al. 2014; Woo 2018, Aspinall and Woo 2019).

In fact, improving the spatial reconstruction of horizontal displacement is a matter of considerable interest in hazard assessment. It is a good proxy of the ground surface extension, which may eventually lead to an increase in the secondary permeability by fracturing and hence of degassing and, in extreme cases, to the opening of new volcanic vents/fissures. Numerical models and experimental studies showed that dyke propagation is influenced by the local properties

of the stress field and by preexisting fractures (Gaffney et al. 2007; Maccafferri et al. 2011; Le Corvec et al. 2013; Corbi et al. 2015, 2016; Rivalta et al. 2019). For the specific case of Campi Flegrei, the maps indicate that the maximum horizontal displacements are located over a semicircular annular region, with a radius of about 2–3 km from the town of Pozzuoli. This pattern is caused by the 3D radial nature of the deformation acting vertically close to the center. Figure 15 shows that faults with metric displacements and clastic dikes, not related to volcanic vents, are exposed in the annular area depicted by the maximum horizontal displacements, together with quite high values of fracture density (Vitale and Isaia 2014; Isaia et al. 2015; Bevilacqua et al. 2015, Vitale et al. 2019). These findings suggest that the area was subject to extension at least since Epoch III of its activity (5.2–3.5 ka; Smith et al. 2011; Bevilacqua et al. 2016, 2017).

In the RIM maps related to the bradyseismic crisis of 1983–1984 (Figs. 11a and 12a) and episode UP5 (Fig. 8), the peak horizontal displacement is observed in the center-west sector of the annular region. Instead, in the episodes UP4, UP6 and UP7 (Figs. 7, 9 and 10) it is apparent that the spatial peak of the horizontal displacement, and hence the maximum extensional deformation, affected the center-east sector of the annular region, where most of the seismic and fumarolic activity of the Campi Flegrei caldera is currently observed (INGV periodic bulletins of Campi Flegrei; <http://www.ov.ingv.it/ov/it/campi-flegrei/275.html>). However, the change of the area of maximum extensional deformation may be related to the differences in the sites and methods of measurement and would require additional data to be confirmed.

On the base of quasi real-time geodetic measurements of the horizontal displacement, the new method and the associated maps could represent a useful input in the definition of short-term vent opening maps. Indeed, although long-term vent opening maps (Bevilacqua et al. 2015, 2017) represent a probability field over the region, they do not consider monitoring information. The map of horizontal displacement could represent additional information in the construction of a vent opening forecast map, under the assumption that the source of the current deformation is going to affect the eruption occurrence and location. Similar considerations could be valid for the vertical displacement maps. The statistical combination of these two layers of information, i.e., a long-term map and a deformation map, is beyond the scope of this study, but it represents a promising task for future research (Bevilacqua et al. 2018; Patra et al. 2019).

A second output of our analysis is the reconstruction of the spatial distribution of the vertical component of ground deformation. In Campi Flegrei caldera, the resulting uplift patterns can be either quasi-circular (e.g., UP6 and UP7) or more elliptical in shape (e.g., UP4 and UP5). A nearly circular shape is also observed for the vertical displacement

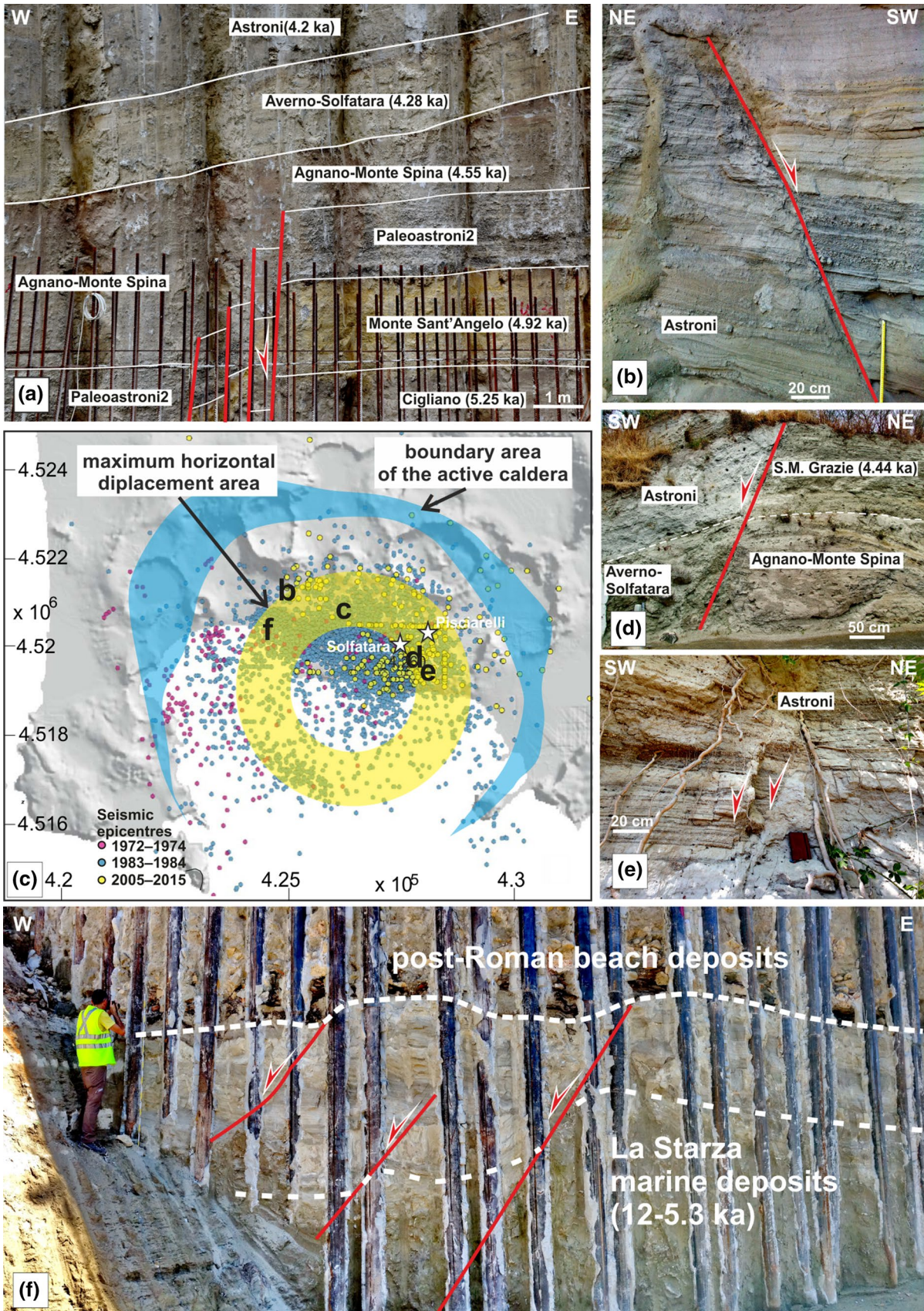


Fig. 15 a, d–f Examples of faults with metric displacements in the maximum horizontal displacement area. **a** COPIN area, Pozzuoli; **b** Cigliano (Pozzuoli); **d–e** via Antiniana, Agnano); **f** La Starza locality, Pozzuoli. Ages of volcanic deposits from Smith et al. (2011). **c** Campi Flegrei map showing earthquake epicenters of 1972–1974, 1983–1984, and 2005–2015 (data from Kilburn et al. 2017), the boundary area of the presently active caldera (blue) and the maximum horizontal displacement area (yellow, ideally extended in the Gulf of Pozzuoli). UTM WGS84, Zone 33 N coordinate system (m)

patterns related to the 1980–1983 and 1983–1984 periods. All the eruptive vents active in the last 5500 years are located within or near the edge of the vertical displacements, indicating that this quasi-circular area corresponds to the most active portion of the caldera, as suggested by different authors (e.g., Barberi et al. 1991; Capuano et al. 2013; Kilburn et al. 2017). The boundary of this area (see Fig. 13a) fits well with the data obtained from the gravity field horizontal derivative map of Campi Flegrei and the density anomaly maps at different depths (Capuano et al. 2013). This is also in agreement with the long-term distribution of the vent opening probability maps of the caldera as derived by Bevilacqua et al. (2015, 2017). The vertical uplift also enabled the calculation of volume variation of the ground for the analyzed periods and its approximated estimation even for not analyzed periods, on the base of linear regression. Indeed, a major interest of the method is to give the order of magnitudes of surface deformation volume, without having to perform source parameters inversion/optimization. On the other hand, this method should not be used to provide constraints for optimization purposes. These volumes may or may not be equivalent to the volume change at the source of deformation, depending on its geometry and depth, but represent significant information that could be used in further data inversion. The substantial proportionality of ΔV and Δh_{\max} suggests that the geometry and position of the volcanic source did not change with time, and that the elastic mechanical behavior of rock did not change during the whole period considered.

Finally, we remark that, even though the RIM has been primarily devised for retrospective hazard analysis of past crises for which remote sensing data were not available, the RIM results could be applied to the latest satellite data available through the Sentinel-1 constellation from the European Space Agency (Guglielmino et al. 2011; Bonforte et al. 2013). For example, the method could be helpful where InSAR data are significantly sparse, that is, where most of the InSAR information is incoherent or scattered in disconnected patches or pixels (e.g., in vegetated areas). The method could provide enriched data to test analytical source models. However, this presents nontrivial technical complications which solution is outside the scope of this work. The additional uncertainty related to the interpolation and the local assumption of radial symmetry should be considered

carefully in the inversion process. A possible strategy may be to employ the family **V** of virtual displacements, without performing the secondary interpolation.

9 Conclusions

Whenever there is reasonable evidence of radial symmetry between each pair of measurements, the new interpolation method RIM presented in this study enables the fast construction of ground displacement maps for both vertical and horizontal components. These maps use and rely only on ground-based measurements, which provide the longest temporal datasets in the past, and could be updated at a faster rate than satellite image acquisitions, even during a rapidly evolving crisis. The method includes uncertainty quantification related to the propagation of measurement error, as well as to the choice of the interpolation graph. The RIM is applied to diverse examples of uplift and subsidence episodes in the active Campi Flegrei caldera, either collected in the period preceding space-borne SAR missions, or more recently. This covers the bradyseismic crisis in 1982–1984, the subsequent subsidence in 1985–1989 and four minor uplift episodes observed in 2011–2013. Significantly, our results are independent on any assumption on the geometry, location and physical properties of the source except for requiring a locally radial pattern, i.e., allowing multiple centers of symmetry. We remark that our study is not equivalent to the ground deformation data obtained by using an analytical source model. The purpose of the RIM is therefore not to reconstruct the source, but only to exploit the additional information on ground deformation provided by the simple assumption of radial symmetry between each pair of nearby measurements. Nevertheless, if radial symmetry is not verified, the RIM results can be inaccurate. In fact, while a source model can physically reconstruct a full deformation profile, also along the radial direction, the key step of the RIM is an interpolation orthogonal to the radii. We envisaged that the new method has potential applications in:

1. The retrospective analysis of historical unrests, included those related to past crises that did not ultimately result in an eruption;
2. The efficient comparison and combination of remote sensing and ground-based measurements;
3. The production of enriched fitting data for the application of a variety of analytical and numerical source models;
4. The production of short-term hazard assessments based on the statistical combination of long-term vent opening maps and monitoring data.

Finally, we summarize the main volcanological findings obtained from the application of the new method to the Campi Flegrei caldera as:

- The interpolated maps of horizontal displacement component show maximum values in a semi-annular region located onland at about 2–3 km from the center of deformation (town of Pozzuoli), in all the uplift episodes considered. Faults with metric displacements, clastic dikes and high values of fracture density are observed within this region. This extensional area includes the Solfatara crater and the Pisciarelli locality, where most of the fumarolic activity is currently observed. The apparent location of the peak horizontal displacement values inside the semi-annular region depends on the considered uplift episode and can either be in the center-west or in the center-east area of the caldera. The semi-annular region could be ideally extended into the Gulf of Pozzuoli, based on the distribution of the epicenters of the earthquakes in the period 1972–2015, thus depicting a quasi-circular annular region.
- The interpolated maps of vertical displacement provide a new estimation of the volume variation of the ground. Extrapolating the volume/angle ratio estimated in the northern circular sector over 360°, the result is generally larger than what obtained using the interpolated map over the Gulf of Pozzuoli. A linear regression is appropriate to compare volume variation ΔV and maximum vertical displacement. The multiplicative factor K in the linear relation is about $0.3 \times 10^6 \text{ m}^3/\text{cm}$ if we estimate the proportion of the ΔV that is captured by the GPS network onland, and we use this to estimate the full ΔV . In this case, the 95% confidence interval on K because of linear regression is $\pm 5\%$. The linear model is consistent with InSAR data of the period 2004–2007. The model allows us to broadly quantify the volume variation during the uplift events of 1950–1952 and 1968–1972, supporting the hypothesis that the elastic mechanical behavior of the rock held during the whole period considered. Isolines of vertical deformation can either be circular or be elliptical with axes in NNE and NWW directions as observed in UP4 and UP5. Moreover, the slope of vertical uplift defines a line at the boundary of the well-known dome-like shape, at about 6 km from the average center of deformation. Notably, the eruptive vents of last 5.2 kyr BP (i.e., Epoch III and Monte Nuovo eruption) are apparently contained between the semi-annular region depicted by maximum horizontal displacement and this external boundary based on vertical uplift.

Acknowledgements We would like to acknowledge the support of: the project FISR2017 “Integrated monitoring rooms and monitoring

networks of the Future: INGV 2.0,” funded by the Ministry of Education, University, and Research (Italy); the project “Collaborative research: Using precursor information to update probabilistic hazard maps,” funded by National Science Foundation (USA), Grant #1821311; the Contract INGV-DPC 2019–2021, Annex B2, Task 2: “Development of a real-time monitoring system for the ground deformation in the Neapolitan volcanic region using HR-GNSS measurements, and development of statistical and numerical models for the short-term vent opening probability in the Campi Flegrei caldera.” The manuscript does not necessarily represent official views and policies of the Dipartimento della Protezione Civile. The authors acknowledge the thorough reviews of Nico Fournier and of five anonymous reviewers.

Author Contribution SV conceived the conceptual idea of a multipolar interpolation. AB conceived the uncertainty quantification approach and set up the theoretical formalism. AB and SV developed the method, implemented and performed the simulations, interpreted the computational results and wrote the paper. SV and ANov performed the processing of InSAR data. All authors discussed the results, commented on the manuscript, provided critical feedback and gave final approval for publication.

Data Availability Statement The datasets necessary to interpret and replicate the results in this article are all included as Supporting Information. In particular, the graphs and the analyzed displacement values of GPS data, the GPT data and the leveling data are in Supporting Information SI4, SI5 and SI6, respectively. For the sake of completeness, we include the GPS time series from De Martino et al. (2014a). We also include the results of a sensitivity analysis performed over saturated graphs (SI2) and the 5th and 95th percentiles of uncertainty of U4–U7 (SI3).

Open Access This article is licensed under a Creative Commons Attribution 4.0 International License, which permits use, sharing, adaptation, distribution and reproduction in any medium or format, as long as you give appropriate credit to the original author(s) and the source, provide a link to the Creative Commons licence, and indicate if changes were made. The images or other third party material in this article are included in the article’s Creative Commons licence, unless indicated otherwise in a credit line to the material. If material is not included in the article’s Creative Commons licence and your intended use is not permitted by statutory regulation or exceeds the permitted use, you will need to obtain permission directly from the copyright holder. To view a copy of this licence, visit <http://creativecommons.org/licenses/by/4.0/>.

Appendix A. Volume variation of the ground based on InSAR acquisitions

In order to compare our estimates of ground displacement volume with independent estimations, we exploited also the InSAR results generated from the ENVISAT SAR acquisitions on ascending (track 129, frame 809) and descending (track 36, frame 2781) orbits and covering two minor uplift and subsidence events occurred in the period 2004–2007. Although a more extensive comparison would be feasible on other time windows, we limited our analysis to this preliminary example, because the required data processing is not trivial, and the uncertainty affecting the displacement is significant. Additional research aimed at the further

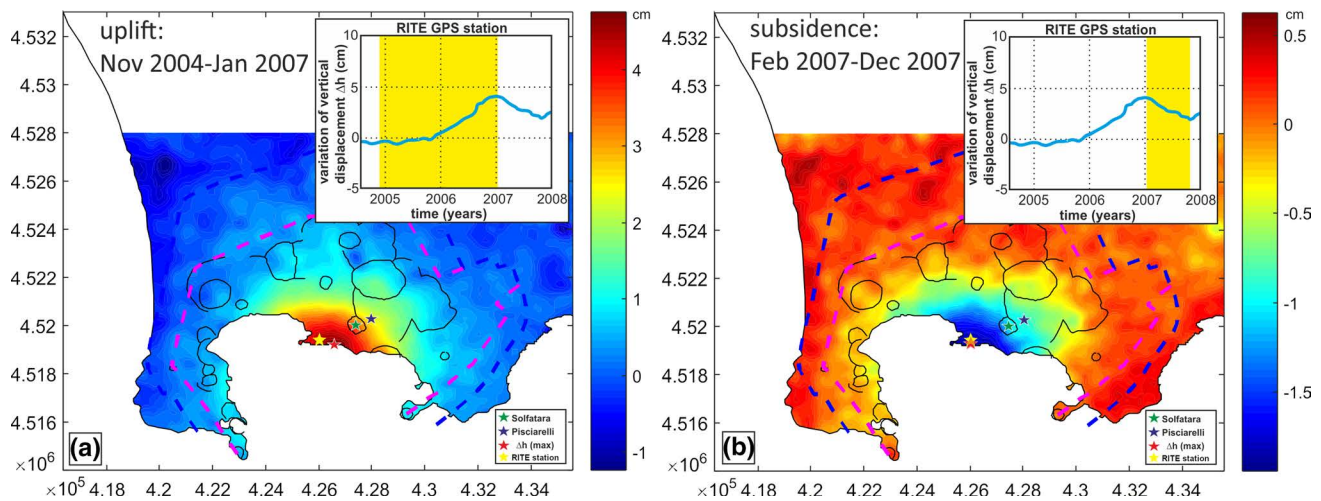


Fig. 16 Interpolated maps from InSAR data. **a** Uplift during Nov 2004–Jan 2007, **b** subsidence during Feb 2007–Dec 2007. Δh : variation of vertical displacement measured at RITE GPS station. UTM

WGS84, Zone 33 N coordinate system (m). Dashed lines display the two caldera boundaries

reconstruction of the vertical and horizontal deformation from the processing of remote sensing data in combination with ground GPS is a challenging task that is outside the purpose of this paper (e.g., Guglielmino et al. 2011; Bonforte et al. 2013).

The SAR images were processed by Persistent Scatterer (PS) Interferometry techniques (Costantini et al. 2017) and made available through the Extraordinary Plan for Environmental Remote Sensing funded by the Italian Ministry for the Environment, Land and Sea (Di Martire et al. 2017). For each PS, InSAR can only measure a projection of the real 3D deformation vector along the satellite Line Of Sight (LOS). Therefore, only by exploiting the deformation measures taken over the same point from two different acquisition geometries (namely the ascending and descending orbits), it is possible to retrieve the vertical and east–west directions of displacement, as shown in Dalla Via et al. (2012).

In particular, we generated a 100×100 grid and we assigned for each PS the mean value of the displacement data included in a circle with a radius of 300 m. Subsequently, we interpolated these data by a linear interpolation method. The obtained maps (Fig. 16) are similar to those constructed by RIM and show a radial pattern of the vertical displacement both for the uplift and subsidence phase. We calculated the volume variation of the ground (ΔV expressed as millions cubic meters [Mm³]) in the two bradyseismic episodes by the definitions of ΔV_3 and ΔV_4 previously explained, because these InSAR measurements are limited to the inland sector only. The obtained results are reported in Table 1(B).

References

- Acocella V (2008) Activating and reactivating pairs of nested collapses during caldera-forming eruptions: Campi Flegrei (Italy). *Geophys Res Lett* 35:L17304. <https://doi.org/10.1029/2008GL035078>
- Acocella V, Di Lorenzo R, Newhall C, Scandone R (2015) An overview of recent (1988 to 2014) caldera unrest: knowledge and perspectives. *Rev Geophys*. <https://doi.org/10.1002/2015RG000492>
- Amoruso A, Crescentini L (2011) Modelling deformation due to a pressurized ellipsoidal cavity, with reference to the Campi Flegrei caldera, Italy. *Geophys Res Lett* 38:L01303. <https://doi.org/10.1029/2010GL046030>
- Amoruso A, Crescentini L, Berrino G (2008) Simultaneous inversion of deformation and gravity changes in a horizontally layered halfspace: evidences for magma intrusion during the 1982–1984 unrest at Campi Flegrei caldera (Italy). *Earth Planet Sci Lett* 272:181–188
- Amoruso A, Crescentini L, Sabetta I (2014a) Paired deformation sources of the Campi Flegrei caldera (Italy) required by recent (1980–2010) deformation history. *J Geophys Res Solid Earth* 119:858–879
- Amoruso A, Crescentini L, Sabetta I, De Martino P, Obrizzo F, Tammaro U (2014b) Clues to the cause of the 2011–2013 Campi Flegrei caldera unrest, Italy, from continuous GPS data. *Geophys Res Lett* 41:3081–3088. <https://doi.org/10.1002/2014GL059539>
- Aspinall W, Woo G (2019) Counterfactual analysis of runaway volcanic explosions. *Front. Earth Sci.* 7:222. <https://doi.org/10.3389/feart.2019.00222>
- Barbarella M, Gubellini A, Russo P (1983) Rilievo ed Analisi dei Recenti Movimenti Orizzontali del Suolo Nell'area Flegrea, paper presented at Atti 2° Convegno GNGTS, Tipografia ESA Editrice, Rome, Italy, 12–14 Dec
- Barberi F, Cassano E, La Torre P, Sbrana A (1991) Structural evolution of Campi Flegrei caldera in light of volcanological and geophysical data. *J Volcanol Geotherm Res* 48(1-2):33–49
- Battaglia M, Troise C, Obrizzo F, Pingue F, De Natale G (2006) Evidence for fluid migration as the source of deformation at Campi Flegrei caldera (Italy). *Geophys Res Lett* 33:L01307. <https://doi.org/10.1029/2005GL024904>

- Berrino G, Corrado G, Luongo G, Toro B (1984) Ground deformation and gravity changes accompanying the Pozzuoli uplift. *Bull Volcanol* 47:187–200
- Bevilacqua A (2016) Doubly stochastic models for volcanic hazard assessment at Campi Flegrei caldera. Theses, 21, Edizioni della Normale, Birkhäuser/Springer, Pisa, p 227
- Bevilacqua A, Isaia R, Neri A, Vitale S, Aspinall WP, Bisson M, Flandoli F, Baxter PJ, Bertagnini A, Esposti Ongaro T, Iannuzzi E, Pistolesi M, Rosi M (2015) Quantifying volcanic hazard at Campi Flegrei caldera (Italy) with uncertainty assessment: I. Vent opening maps. *J Geophys Res Solid Earth* 120:2309–2329
- Bevilacqua A, Flandoli F, Neri A, Isaia R, Vitale S (2016) Temporal models for the episodic volcanism of Campi Flegrei caldera (Italy) with uncertainty quantification. *J Geophys Res* 121:7821–7845
- Bevilacqua A, Neri A, Bisson M, Esposti Ongaro T, Flandoli F, Isaia R, Rosi M, Vitale S (2017) The effects of vent location, event scale and time forecasts on pyroclastic density current hazard maps at Campi Flegrei caldera (Italy). *Front Earth Sci* 5:1–16
- Bevilacqua A, Patra A, Pitman EB, Bursik M, Giudicepietro F, Macedonio G, Neri A, Valentine G (2018) Volcanic eruption time forecasting using a stochastic enhancement of the Failure Forecast Method. AGU Fall Meeting 2018, V23G - 0155, ID: 413317
- Bevilacqua A, Pitman EB, Patra A, Neri A, Bursik M, Voight B (2019) Probabilistic enhancement of the failure forecast method using a stochastic differential equation and application to volcanic eruption forecasts. *Front Earth Sci* 7:135. <https://doi.org/10.3389/feart.2019.00135>
- Bianchi R, Coradini A, Federico C, Giberti G, Lanciano P, Pozzi JP, Sartoris G, Scandone R (1987) Modeling of surface deformation in volcanic areas: the 1970–1972 and 1982–1984 crises of Campi Flegrei, Italy. *J Geophys Res* 92(B13):14139–14150
- Bonafede M (1991) Hot fluid migration: an efficient source of ground deformation: application to the 1982–1985 crisis at Campi Flegrei-Italy. *J Volcanol Geoth Res* 48:187–198
- Bonasia V, Pingue F, Scarpa R (1984) A fluid-filled fracture as possible mechanism of ground deformation at Phlegraean Fields, Italy. *Bull Volcanol* 47:313–320
- Bonforte A, Guglielmino F, Puglisi G (2013) Interaction between magma intrusion and flank dynamics at Mt. Etna in 2008, imaged by integrated dense GPS and DInSAR data. *Geochem Geophys Geosyst* 14(8):2818–2835
- Burgmann R, Rosen PA, Fielding EJ (2000) Synthetic aperture radar interferometry to measure Earth's surface topography and its deformation. *Annu Rev Earth Planet Sci* 28:169–209
- Caliro S, Chiodini G, Paonita A (2014) Geochemical evidences of magma dynamics at Campi Flegrei (Italy). *Geoch Cosmol Acta* 132:1–15
- Capuano P, Russo G, Civetta L, Orsi G, D'Antonio M, Moretti R (2013) The active portion of the Campi Flegrei caldera structure imaged by 3-D inversion of gravity data. *Geochem Geophys Geosyst* 14:4681–4697
- Castaldo R, D'Auria L, Pepe S, Solaro G, De Novellis V, Tizzani P (2018) The impact of crustal rheology on natural seismicity: Campi Flegrei caldera case study. *Geosci Front*. <https://doi.org/10.1016/j.gsf.2018.02.003>
- Cervelli PF, Fournier T, Freymueller J, Power JA (2006) Ground deformation associated with the precursory unrest and early phases of the January 2006 eruption of Augustine Volcano, Alaska. *Geophys Res Lett* 33:L18304. <https://doi.org/10.1029/2006GL027219>
- Chadwick WW, Jónsson S Jr, Geist DJ, Poland M, Johnson DJ, Batt S, Harpp KS, Ruiz A (2011) The May 2005 eruption of Fernandina volcano, Galápagos: the first circumferential dike intrusion observed by GPS and InSAR. *Bull Volcanol* 73:679–697
- Chaussard E, Amelung F (2012) Precursory inflation of shallow magma reservoirs at west Sunda volcanoes detected by InSAR. *Geophys Res Lett* 39:L21311. <https://doi.org/10.1029/2012GL053817>
- Chen Y, Remy D, Froger JL, Peltier A, Villeneuve N, Darrozes J, Perfettini H, Bonvalot S (2017) Long-term ground displacement observations using InSAR and GNSS at Piton de la Fournaise volcano between 2009 and 2014. *Remote Sens Environ* 194:230–247
- Chiodini G, Selva J, Del Pezzo E, Marsan D, De Siena L, D'Auria L, Bianco F, Caliro S, De Martino P, Ricciolino P, Petrillo Z (2017) Clues on the origin of post-2000 earthquakes at Campi Flegrei caldera (Italy). *Sci Rep* 4472:2045–2322
- Corbi F, Rivalta E, Pinel V, Maccaferri F, Bagnardi M, Acocella V (2015) How caldera collapse shapes the shallow emplacement and transfer of magma in active volcanoes. *Earth Planet Sci Lett* 431:287–293
- Corbi F, Rivalta E, Pinel V, Maccaferri F, Acocella V (2016) Understanding the link between circumferential dikes and eruptive fissures around calderas based on numerical and analog models. *Geophys Res Lett* 43:6212–6219
- Corrado G, Guerra I, Lo Bascio A, Luongo G, Rampoldi R (1977) Inflation and microearthquake activity of phlegraean fields, Italy. *Bull Volcanol* 40(3):169–188
- Costa A, Folch A, Macedonio G, Giaccio B, Isaia R, Smith VC (2012) Quantifying volcanic ash dispersal and impact of the Campanian Ignimbrite super-eruption. *Geophys Res Lett* 39:L10310. <https://doi.org/10.1029/2012GL051605>
- Costantini M, Ferretti A, Minati F, Falco S, Trillo F, Colombo D, Novali F, Malvarosa F, Mammone C, Vecchioli F, Rucci A (2017) Analysis of surface deformations over the whole Italian territory by interferometric processing of ERS, Envisat and COSMO-SkyMed radar data. *Remote Sens Environ* 202:250–275
- Dalla Via G, Crosetto M, Crippa B (2012) Resolving vertical and east-west horizontal motion from differential interferometric synthetic aperture radar: the L'Aquila earthquake. *J Geophys Res Solid Earth* 117:B02310. <https://doi.org/10.1029/2011JB008689>
- D'Auria L, Pepe S, Castaldo R, Giudicepietro F, Macedonio G, Ricciolino P, Tizzani P, Casu F, Lanari R, Manzo M, Martini M, Sansosti E, Zinno I (2015) Magma injection beneath the urban area of Naples: a new mechanism for the 2012–2013 volcanic unrest at Campi Flegrei caldera. *Sci Rep*. <https://doi.org/10.1038/srep13100>
- Davis PM (1986) Surface deformation due to inflation of an arbitrarily oriented triaxial ellipsoidal cavity in an elastic half-space, with reference to Kilauea Volcano, Hawaii. *J Geophys Res* 91:7429–7438
- De Martino P, Tammaro U, Obrizzo F (2014a) GPS time series at Campi Flegrei caldera (2000–2013). *Ann Geophys* 57(2):S0213. <https://doi.org/10.4401/ag-6431>
- De Martino P, Guardato S, Tammaro U, Vassallo M, Iannaccone G (2014b) A first GPS measurement of vertical seafloor displacement in the Campi Flegrei Caldera (Italy). *J Volcanol Geoth Res* 276:145–151. <https://doi.org/10.1016/j.jvolgeores.2014.03.003>
- De Natale G, Troise C, Pingue F, Mastrolorenzo G, Pappalardo L, Boschi E (2006) The Campi Flegrei caldera: unrest mechanisms and hazards. In: Troise C, De Natale G, Kilburn CRJ (eds) Mechanisms of activity and unrest at large calderas, vol 269. Geological Society, London Special Publications, London, pp 25–45
- de Silva SL, Mucek EA, Gregg MP, Pratomo I (2015) Resurgent Toba—field, chronologic, and model constraints on time scales and mechanisms of resurgence at large calderas. *Front Earth Sci* 3:25–42
- Deino AL, Orsi G, De Vita S, Piochi M (2004) The age of the Neapolitan Yellow Tuff caldera-forming eruption (Campi Flegrei

- caldera, Italy) assessed by $^{40}\text{Ar}/^{39}\text{Ar}$ dating method. *J Volcanol Geotherm Res* 133:157–170
- Del Gaudio C, Aquino I, Ricciardi GP, Ricco C, Scandone R (2010) Unrest episodes at Campi Flegrei: a reconstruction of vertical ground movements during 1905–2009. *J Volcanol Geotherm Res* 195:48–56
- Delaney PT, McTigue DF (1994) Volume of magma accumulation or withdrawal estimated from surface uplift or subsidence, with application to the 1960 collapse of Kilauea volcano. *Bull Volcanol* 56:417–424. <https://doi.org/10.1007/BF00302823>
- Di Martire D, Paci M, Confuorto P, Costabile S, Guastaferrò F, Verta A, Calcaterra D (2017) A nation-wide system for landslide mapping and risk management in Italy: the second Not-ordinary Plan of Environmental Remote Sensing. *Int J Appl Earth Obs Geoinf* 63:143–157
- Di Traglia F, Nolesini T, Intrieri E, Mugnai F, Leva D, Rosi M, Casagli N (2014) Review of ten years of volcano deformations recorded by the ground-based InSAR monitoring system at Stromboli volcano: a tool to mitigate volcano flank dynamics and intense volcanic activity. *Earth Sci Res* 139:317–335
- Di Vito MA, Isaia R, Orsi G, Southon J, de Vita S, D'Antonio M, Pappalardo L, Piochi M (1999) Volcanism and deformation in the past 12 ka at the Campi Flegrei caldera (Italy). *J Volcanol Geotherm Res* 91:221–246
- Dixon TH, Mao A, Bursik M, Heflin M, Langbein J, Stein R, Webb F (1997) Continuous monitoring of surface deformation at Long Valley Caldera, California, with GPS. *J Geophys Res Solid Earth* 102(B6):12017–12034
- Dvorak JJ, Berrino G (1991) Recent ground movement and seismic activity in Campi Flegrei, southern Italy: episodic growth of a resurgent dome. *J Geophys Res* 96(B2):2309–2323
- Dzurisin D (2006) Volcano deformation: new geodetic monitoring techniques. Springer, Berlin
- Dzurisin D, Poland MP, Bürgmann R (2002) Steady subsidence of Medicine Lake volcano, northern California, revealed by repeated leveling surveys. *J Geophys Res* 107(B12):2372. <https://doi.org/10.1029/2001JB000893>
- Fialko Y, Khazan Y, Simons M (2001) Deformation due to a pressurized horizontal circular crack in an elastic half-space, with applications to volcano geodesy. *Geophys J Int* 146:181–190. <https://doi.org/10.1046/j.1365-246X.2001.00452.x>
- Fournier TJ, Pritchard ME, Riddick SN (2010) Duration, magnitude, and frequency of subaerial volcano deformation events: new results from Latin America using InSAR and a global synthesis. *Geochem Geophys Geosyst* 11:Q01003. <https://doi.org/10.1029/2009GC002558>
- Gaffney ES, Damjanac B, Valentine GA (2007) Localization of volcanic activity: 2. Effects of pre-existing structure. *Earth Planet Sci Lett* 263(3):323–338
- Galgana GA, Newman AV, Hamburger MW, Solidum RU (2014) Geodetic observations and modeling of time-varying deformation at Taal Volcano, Philippines. *J Volcanol Geoth Res* 271:11–23
- Giaccio B, Hajdas I, Isaia R, Deino A, Nomade S (2017) High-precision ^{14}C and $^{40}\text{Ar}/^{39}\text{Ar}$ dating of the Campanian ignimbrite (Y-5) reconciles the time-scales of climatic-cultural processes at 40 Ka. *Scientific Reports* 7:45940
- Giudicepietro F, Macedonio G, D'Auria L, Martini M (2016) Insight into vent opening probability in volcanic calderas in the light of a sill intrusion model. *Pure appl Geophys* 173:1703–1720
- Giudicepietro F, Macedonio G, Martini M (2017) A physical model of sill expansion to explain the dynamics of unrest at calderas with application to Campi Flegrei. *Front Earth Sci* 5:54–65
- Gonzalez PJ, Samsonov S, Pepe S, Triampo KF, Tizzani P, Casu F, Fernandez J, Camacho AG, Sansosti E (2013) Magma storage and migration associated with the 2011–2012 El Hierro eruption: implications for shallow magmatic systems at oceanic island volcanoes. *J Geophys Res*. <https://doi.org/10.1002/jgrb.50289>
- Gottsmann J, Rymer H, Berrino G (2006) Unrest at the Campi Flegrei caldera (Italy): a critical evaluation of source parameters from geodetic data inversion. *J Volcanol Geoth Res* 150:132–145
- Grapenthin R, Freymueller JT, Kaufman AM (2013) Geodetic observations during the 2009 eruption of Redoubt volcano, Alaska. *J Volc Geotherm Res* 259:115–132
- Guglielmino F, Bignami C, Bonforte A, Briole P, Obrizzo F, Puglisi G, Stramondo S, Wegmüller U (2011) Analysis of satellite and in situ ground deformation data integrated by the SISTEM approach: the April 3, 2010 earthquake along the Pernicana fault (Mt. Etna-Italy) case study. *Earth Planet Sci Lett* 312:327–336
- Hildreth W, Fierstein J, Calvert A (2017) Early postcaldera rhyolite and structural resurgence at Long Valley Caldera, California. *J Volcanol Geoth Res* 335:1–34
- Hincks TK, Komorowski JC, Sparks SR, Aspinall WP (2014) Retrospective analysis of uncertain eruption precursors at La Soufrière volcano, Guadeloupe, 1975–77: volcanic hazard assessment using a Bayesian Belief Network approach. *J Appl Volcanol* 3:3
- Hooper A, Ófeigsson B, Sigmundsson F, Lund B, Geirsson H, Einarsson P, Sturkell E (2011) Increased capture of magma in the crust promoted by ice-cap retreat in Iceland. *Nat Geosci* 4:783–786
- Iannaccone G, Guardato S, Donnarumma GP, De Martino P, Dolce M, Macedonio G, Chierici F, Beranzoli L (2018) Measurement of seafloor deformation in the marine sector of the Campi Flegrei caldera (Italy). *J Geophys Res Solid Earth* 123:66–83
- Isaia R, Marianelli P, Sbrana R (2009) Caldera unrest prior to intense volcanism in Campi Flegrei (Italy) implications for caldera dynamics and future eruptive scenarios. *Geophys Res Lett* 36:L21303. <https://doi.org/10.1029/2009gl040513>
- Isaia R, Vitale S, Di Giuseppe MG, Iannuzzi E, Tramparulo FDA, Troiano A (2015) Stratigraphy, structure and volcano-tectonic evolution of Solfatara maar-diatreme (Campi Flegrei, Italy). *Geol Soc Am Bull* 127:1485–1504
- Ji L, Lu Z, Dzurisin D, Senyukov S (2013) Pre-eruption deformation caused by dike intrusion beneath Kizimen volcano, Kamchatka, Russia, observed by InSAR. *J Volc Geother Res* 256:87–95
- Kilburn CRJ, De Natale G, Carlino S (2017) Progressive approach to eruption at Campi Flegrei caldera in southern Italy. *Nat Commun*. <https://doi.org/10.1038/ncomms15312>
- Lagios E, Sakkas V, Novali F, Bellotti F, Ferretti A, Vlachou K, Dietrich V (2013) SqueeSARTM and GPS ground deformation monitoring of Santorini Volcano (1992–2012): tectonic implications. *Tectonophysics* 594:38–59
- Le Corvec N, Menand T, Lindsay J (2013) Interaction of ascending magma with pre-existing crustal fractures in monogenetic basaltic volcanism: an experimental approach. *J Geophys Res Solid Earth* 118(3):968–984
- Lima A, De Vivo B, Spera FJ, Bodnar RJ, Milia A, Nunziata C, Belkin HE, Cannatelli C (2009) Thermodynamic model for uplift and deflation episodes (bradyseism) associated with magmatic hydrothermal activity at the Campi Flegrei active volcanic center (Italy). *Earth Sci Rev* 97:44–58
- Lisowski M (2006) Analytical volcano deformation source models. In: Dzurisin D (ed) *Volcano deformation: new geodetic monitoring techniques*, vol 8. Springer, Berlin, Heidelberg, pp 279–304
- Maccaferri F, Bonafede M, Rivalta E (2011) A quantitative study of the mechanisms governing dike propagation, dike arrest and sill formation. *J Volcanol Geoth Res* 208:39–50
- Macedonio G, Giudicepietro F, D'Auria L, Martini M (2014) Sill intrusion as a source mechanism of unrest at volcanic calderas. *J Geophys Res* 119:3986–4000
- Massonnet D, Feigl KL (1998) Radar interferometry and its application to changes in the earth's surface. *Rev Geophys* 36:441–500

- McTigue DF (1987) Elastic stress and deformation near a finite spherical magma body: resolution of the point source paradox. *J Geophys Res* 92:12931–12940
- Miyagi Y, Freymueller JT, Kimata F, Sato T, Mann D (2004) Surface deformation caused by shallow magmatic activity at Okmok volcano, Alaska, detected by GPS campaigns 2000–2002. *Earth Planets Space* 56:e29–e32
- Mogi K (1958) Relations between the eruptions of various volcanoes and the deformations of the ground surfaces around them. *Bull Earthq Res Inst Univ Tokyo* 36:99–134
- Mori J, McKee C, Itikarai I, de Saint Ours P, Talai B (1986) Sea level measurements for inferring ground deformations in Rabaul Caldera. *Geo-Mar Lett* 6(4):241–246
- Murase M, Lin CH, Kimata F, Mori H, Pu HC (2014) Volcano-hydrothermal activity detected by precise levelling surveys at the Tatan volcano group in Northern Taiwan during 2006–2013. *J Volcanol Geoth Res* 286:30–40
- Newhall CG, Dzurisin D (1988a) Historical Unrest at Large Calderas of the World, volume 1. USGS Bulletin 1855, Washington, p 610
- Newhall CG, Dzurisin D (1988b) Historical Unrest at Large Calderas of the World, volume 2. USGS Bulletin 1855, Washington, p 520
- Okada Y (1985) Surface deformation due to shear and tensile faults in a half-space. *Bull Seismol Soc Am* 75:1135–1154
- Orsi G, D'Antonio M, de Vita S, Gallo G (1992) The Neapolitan Yellow Tuff, a large-magnitude trachytic phreatoplinian eruption: eruptive dynamics, magma withdrawal and caldera collapse. *J Volcanol Geoth Res*. [https://doi.org/10.1016/0377-0273\(92\)90086-S](https://doi.org/10.1016/0377-0273(92)90086-S)
- Orsi G, Civetta L, Del Gaudio C, De Vita S, Di Vito MA, Isaia R, Petrazzuoli S, Ricciardi GP, Ricco C (1999) Short-term ground deformations and seismicity in the nested Campi Flegrei caldera (Italy). *J Volcanol Geotherm Res* 91:415–451
- Orsi G, Di Vito MA, Isaia R (2004) Volcanic hazard assessment at the restless Campi Flegrei caldera. *Bull Volcanol* 66:514–530
- Palano M, Puglisi G, Gresta S (2008) Ground deformation patterns at Mt. Etna from 1993 to 2000 from joint use of InSAR and GPS techniques. *J Volcanol Geotherm Res* 169:99–120
- Parker AL, Biggs J, Lu Z (2014) Investigating long-term subsidence at Medicine Lake Volcano, CA, using multitemporal InSAR. *Geophys J Int* 199:844–859
- Patra A, Bevilacqua A, Pitman EB, Bursik M, Voight B, Neri A, Macedonio G, Flandoli F, De Martino P, Giudicepietro F, Vitale S (2019) A statistical approach for spatial mapping and temporal forecasts of volcanic eruptions using monitoring data. AGU Fall Meeting 2019, V23I - 0321, ID: 602760
- Poland M, Burgmann R, Dzurisin D, Lisowski M, Masterlark T, Owen S, Fink J (2006) Constraints on the mechanism of long-term, steady subsidence at Medicine Lake Volcano, Northern California, from GPS, Leveling, and InSAR. *J Volcanol Geoth Res* 150:55–78
- Punmia BC, Jain AK (2005) Surveying. Firewall Media, New Delhi
- Rivalta E, Segall P (2008) Magma compressibility and the missing source for some dike intrusions. *Geophys Res Lett* 35:L04306
- Rivalta E, Corbi F, Passarelli L, Acocella V, Davis T, Di Vito MA (2019) Stress inversions to forecast magma pathways and eruptive vent location. *Sci Adv* 5:7. <https://doi.org/10.1126/sciadv.aau9784>
- Robertson RM, Kilburn CRJ (2016) Deformation regime and long-term precursors to eruption at large calderas: rabaul, Papua New Guinea. *Earth Planet Sci Lett* 438:86–94
- Rosi M, Sbrana A, Principe C (1983) The Phlegrean Fields: structural evolution, volcanic history and eruptive mechanisms. *J Volcanol Geotherm Res* 17:273–288
- Scarpato C, Cole P, Perrotta A (1993) The Neapolitan Yellow Tuff—a large volume multiphase eruption from Campi Flegrei, Southern Italy. *Bull Volcanol* 55:343–356
- Selva J, Marzocchi W, Papale P, Sandri L (2012) Operational eruption forecasting at high-risk volcanoes: the case of Campi Flegrei, Naples. *Journal of Applied Volcanology. Soc Volcanoes* 1:5
- Selva J, Marzocchi W, Sandri L, Costa A (2015) Operational short-term volcanic hazard analysis: methods and perspectives. In: Shroder JF, Papale P (eds) Ch. 9: Volcanic Hazards, Risks and Disasters. Elsevier, New York, pp 233–259
- Smith VC, Isaia R, Pearce NJC (2011) Tephrostratigraphy and glass compositions of post-15 kyr Campi Flegrei eruptions: implications for eruption history and chronostratigraphic markers. *Quat Sci Rev* 30:3638–3660
- Stramondo S, Trasatti E, Albano M, Moro M, Chini M, Bignami C, Polcari M, Saroli M (2016) Uncovering deformation processes from surface displacements. *J Geodyn* 102:58–82
- Tizzani P, Battaglia M, Castaldo R, Pepe A, Zeni G, Lanari R (2015) Magma and fluid migration at Yellowstone Caldera in the last three decades inferred from InSAR, leveling, and gravity measurements. *J Geophys Res Solid Earth* 120(4):2627–2647
- Todesco M, Costa A, Comastri A, Colleoni F, Spada G, Quarenì F (2014) Vertical ground displacement at Campi Flegrei (Italy) in the fifth century: rapid subsidence driven by pore pressure drop. *Geophys Res Lett* 41:1471–1478
- Trasatti E, Bonafede M, Ferrari C, Giunchi C, Berrino G (2011) On deformation sources in volcanic areas: modeling the Campi Flegrei (Italy) 1982–84 unrest. *Earth Planet Sci Lett* 306:175–185
- Trasatti E, Polcari M, Bonafede M, Stramondo S (2015) Geodetic constraints to the source mechanism of the 2011–2013 unrest at Campi Flegrei (Italy) caldera. *Geophys Res Lett* 42:3847–3854
- Troiano A, Di Giuseppe MG, Petrillo Z, Troise C, De Natale G (2011) Ground deformation at calderas driven by fluid injection: modelling unrest episodes at Campi Flegrei (Italy). *Geophys J Int* 187:833–847
- Troise C, De Natale G, Pingue F, Obrizzo F, De Martino P, Tammaro U, Boschi E (2007) Renewed ground uplift at Campi Flegrei caldera (Italy): new insight on magmatic processes and forecast. *Geophys Res Lett* 34:L03301. <https://doi.org/10.1029/2006GL028545>
- Troise C, De Natale G, Schiavone R, Somma R, Moretti R (2019) The Campi Flegrei caldera unrest: discriminating magma intrusions from hydrothermal effects and implications for possible evolution. *Earth Sci Rev* 188:108–122
- Ukawa M, Fujita E, Ueda H, Kumagai T, Nakajima H, Morita H (2006) Long-term geodetic measurements of large scale deformation at Iwo-jima caldera, Japan. *J Volcanol Geoth Res* 150:98–118
- Vitale S, Ciarcia S (2018) Tectono-stratigraphic setting of the Campania region (southern Italy). *J Maps* 14:9–21
- Vitale S, Isaia R (2014) Fractures and faults in volcanic rocks (Campi Flegrei, southern Italy): insight into volcano-tectonic processes. *Int J Earth Sci* 103:801–819
- Vitale S, Isaia R, Ciarcia S, Di Giuseppe MG, Iannuzzi E, Prinzi EP et al (2019) Seismically induced soft-sediment deformation phenomena during the volcano-tectonic activity of Campi Flegrei caldera (southern Italy) in the last 15 kyr. *Tectonics* 38:1999–2018. <https://doi.org/10.1029/2018TC005267>
- Voight B, Hoblitt RP, Clarke AB, Lockhart AB, Miller AD, Lynch L, McMahon J (1998) Remarkable cyclic ground deformation monitored in real-time on Montserrat, and its use in eruption forecasting. *Geophys Res Lett* 25:3405–3408
- Voight B, Young KD, Hidayat Subandrio D, Purbawinata MA, Ratdomopurbo Suharna, Panut A, Sayudi DS, LaHusen R, Marso J, Murray TL, Dejean M, Iguchi M, Ishihara K (2000) Deformation and seismic precursors to dome-collapse and fountain-collapse nuées ardentes at Merapi Volcano, Java, Indonesia, 1994–1998. *J Volcanol Geoth Res* 100:261–287

- Woo G (2018) Stochastic modeling of past volcanic crises. *Front Earth Sci.* <https://doi.org/10.3389/feart.2018.00001>
- Woo JYL, Kilburn CRJ (2010) Intrusion and deformation at Campi Flegrei, southern Italy: sills, dikes, and regional extension. *J Geophys Res* 115:B12210. <https://doi.org/10.1029/2009JB006913>
- Yokoyama I (2013) An interpretation on secular changes in deformation caused by the 1914 Eruption of Sakurajima Volcano (Sakurajima Special Issue). *Bull Volcanol Soc Jpn* 58(1):77–90