

# Eco-Innovative Solutions for Wasted Landscapes

**Marina Rigillo**

Department of Architecture, University of Naples Federico II (UNINA), Italy [mrigillo@unina.it](mailto:mrigillo@unina.it)

**Libera Amenta**

Department of Architecture, University of Naples Federico II (UNINA), Italy; Department of Urbanism, Delft University of Technology (TUD), The Netherlands [libera.amenta@gmail.com](mailto:libera.amenta@gmail.com)

**Anna Attademo**

Department of Architecture, University of Naples Federico II (UNINA) [annieattademo@yahoo.it](mailto:annieattademo@yahoo.it)

**Lorenzo Boccia**

Department of Architecture, University of Naples Federico II (UNINA) [lorenzo.boccia@unina.it](mailto:lorenzo.boccia@unina.it)

**Enrico Formato**

Department of Architecture, University of Naples Federico II (UNINA) [enrico.formato@unina.it](mailto:enrico.formato@unina.it)

**Michelangelo Russo**

Department of Architecture, University of Naples Federico II (UNINA) [michelangelo.russo@unina.it](mailto:michelangelo.russo@unina.it)

**Abstract**

The paper focuses on the impact generated by the un-efficient management of waste flows, on both natural environment, and urbanization process, and on the opportunity to invert it by regenerating Wasted Landscapes, i.e. underused, polluted and abandoned sites, especially located in peri-urban areas. This is one of the aims of the REPAiR project, funded in 2016 by the European Commission within the Horizon 2020 framework, developed by University of Naples with TU Delft as Lead Partner. The implementation of multi-scaling/multi-disciplinary approach, for testing out collaborative decision-making, has seen so far the research of a scientific based definition of peri-urban area in the context of the Metropolitan Area of Naples. The selection of the peri-urban areas has also been tested through Living Labs, aimed at designing eco-innovative solutions towards circularity.

**Keywords**

Wasted Landscapes, Circular Economy, Urban Metabolism, Peri-Urban, Eco-innovation, Living Labs

*Received: April 2018 / Accepted: June 2018*

© The Author(s) 2018. This article is published with Creative Commons license CC BY-SA 4.0 Firenze University Press.

DOI: 10.13128/RV-22995 - [www.fupress.net/index.php/ri-vista/](http://www.fupress.net/index.php/ri-vista/)

## Introduction

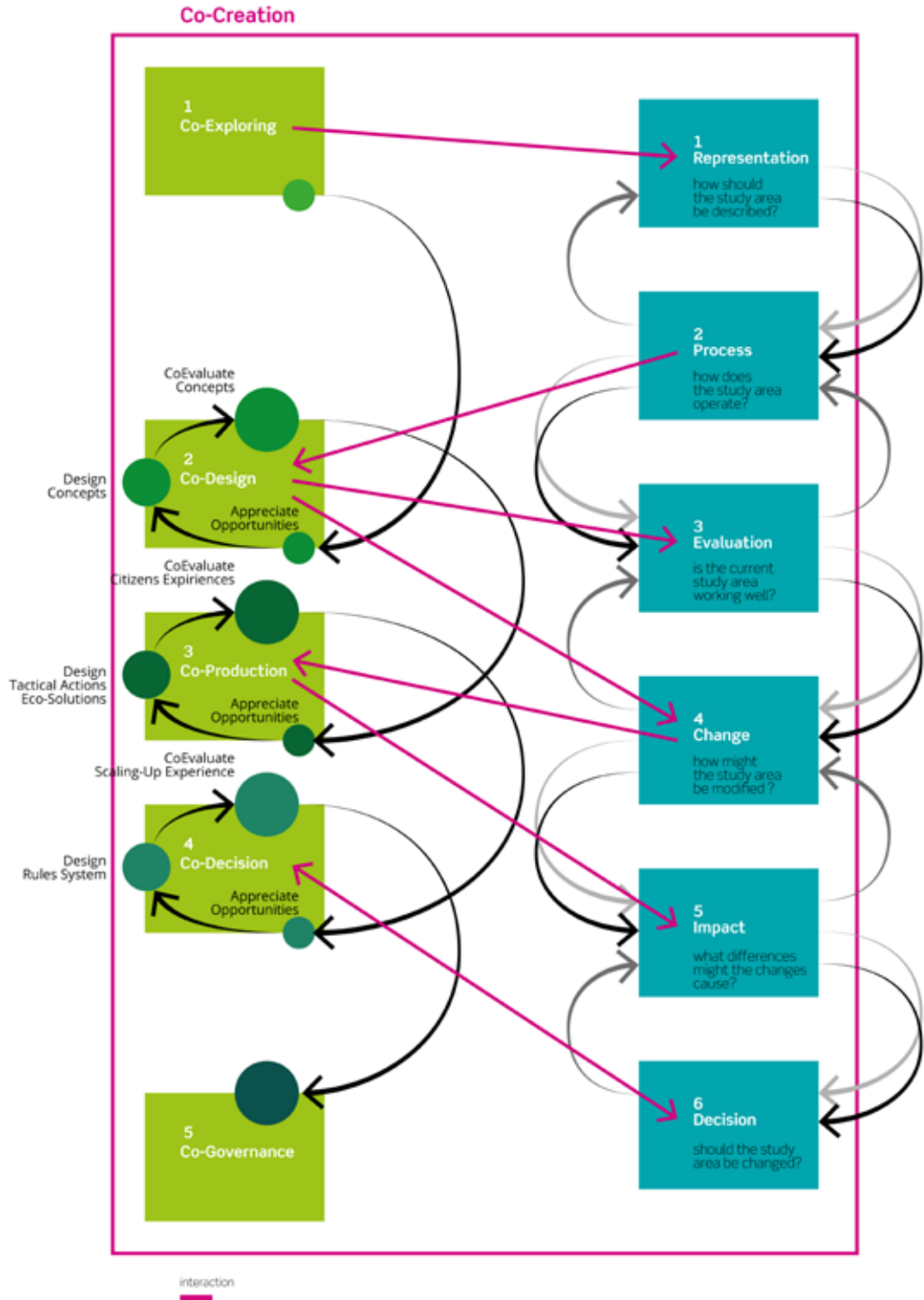
This paper<sup>1</sup> explores the paradigm of circularity as an innovative approach for planning, stressing out the complexity of urban systems and working on the interactions between in-bound and out-bound flows (Swyngedouw, 2006; EC, 2011, 2014; Allen, Broto and Rapoport, 2012; Golubiewski, 2012; Ibañez and Katsikis, 2014). Such approach is based on the critical review of planning paradigms, not anymore referred to the linear urban growth (Latouche, 2009), but focused rather on both the paradigm of urban resilience (Davoudi, 2012) and resource preservation. This approach is here referring to the capacity of enhancing, recovering and re-using urban and peri-urban areas in terms of reducing soil loss and managing waste cycles.

Therefore, circularity refers to multi-scaling design approaches and to innovative models of designing products, processes, and projects. In particular, the concept of eco-innovation seems to be appropriate to explain the design potentials, when extended to the environment according to the EU definition: «Eco-innovation refers to all forms of innovation – technological and non-technological – that create business opportunities and benefit for the environment by preventing or reducing their impact, or by optimizing the use of resources» (EC, 2012).

The EU Commission boosts the role of eco-innova-

tion as a central action for the transition towards a sustainable growth. To do so, a set of policies and measures such as the *Europe 2020 strategy for a smart, sustainable and inclusive growth* (EC 2010b), the seven flagship initiatives (EC 2010b), the *Eco-innovation Action Plan* (EcoAP, 2011) and the program Horizon 2020<sup>2</sup> have been developed so far. Within this framework, the call *WASTE-6b-2015: Eco-innovative strategies* aims at promoting the development of Eco-innovative solutions for waste prevention and management in urban and peri-urban areas. The call adopts an integrated urban metabolism approach and actively engages local authorities, citizens and all kind of relevant stakeholders, in a way that is consistent with the objectives of the *European Resource Efficiency Roadmap* (COM 2011) and the *Directive 2008/98/EC on waste* (EC, 2008).

The Horizon research project REPAiR (REsource Management in Peri-urban Areas: Going Beyond Urban Metabolism – GA 688920)<sup>3</sup> runs under the above-mentioned call, and it aims at providing eco-innovative solutions for fostering the quantitative reduction of waste flows in peri-urban areas. Furthermore, REPAiR aims at integrating Life Cycle Thinking and Geo-Design approaches to operationalize Urban Metabolism especially in terms of reduction of Wasted Landscapes<sup>4</sup> in peri-urban areas. Wasted Landscapes are discarded urban are-



**Fig. 1** – REPAiR Peri-Urban Living Labs across Europe  
(Image credit: REPAiR proposal. Graphic: Libera Amenta).

opposite page

**Fig. 2** – Relation between Living Labs process and Geo-Design  
(Graphic: Maria Cerreta, Pasquale Inglese).



as, mainly characterized by a bad quality of life and environmental problems, the leftovers of exhausted lifecycles of territories (Amenta, 2015; Palestino, 2015).

REPAiR does not focus on 'end-of-pipe' solutions, on the contrary, it aims at tracking waste flows back to resource consumption patterns in order to reduce them and estimate the best routes for changes.

This approach makes it possible to achieve iterative visions of both production course and consumption processes within the territorial specificities of each (different) countries involved into the project. Criticalities and opportunities of the whole life cycle are pointed out; boosting the concept of waste from discarded matters to potential resources. (the REPAiR approach is briefly reported in fig. 2).

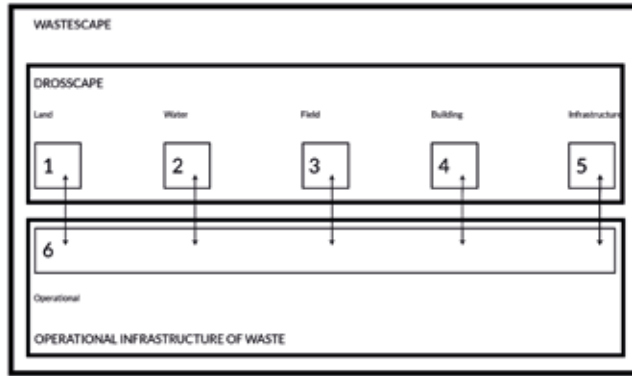
REPAiR specifically focuses on:

- Selected categories of waste flows (Construction&Demolition Waste, Biowaste, *Post consumer plastic waste*, *Waste electrical and electronic equipment*, *Municipal solid waste*), including Wasted Landscapes as innovative object of study;
- Providing more sustainable waste management systems, based on Life Cycle Thinking;
- Testing out new practices for collaborative problem solving, through the implementation of six Peri-Urban Living Labs (PULLs) aimed at involv-

ing local communities in the problem solving activities (Mitchell, 2003; Bilgram, Brem and Voigt, 2008; Steen and Bueren, 2017);

- Supporting decision-makers, through innovative tools, such as Geo-Design Decision Support Environment (GDSE) (Steinitz, 2012; Campagna, 2014);
- Providing new planning approaches, and design solutions for regenerating and recovering Wasted Landscapes in peri-urban areas.

Within the REPAiR partnership (fig. 2), the Italian Research unit (Department of Architecture of Naples of the University of Naples Federico II) has mainly focused on the territorial dimension of waste management and specifically on Wasted Landscapes as scrap products of the urban metabolism. The research interest is given to the peri-urban areas, where waste flows management follows a sectorial, un-efficient approach, running without a comprehensive, territorial strategy by administrators and without any of inhabitants' awareness. Further, peri-urban areas (Donadieu, 1998; Viganò, 2001) are those more affected by the presence of Wasted Landscapes (EC, 2011). They are located in between the urban-rural territories, and they are featured by a kind of chaotic, not-planned land use, where urban uses melt with the (former) rural areas, thus generating new geographies of waste: REPAiR 'wastescapes' (Amenta and Attademo, 2016).



**REPAiR wastescape**



Fig. 3 – REPAiR Wastespaces identification (Graphic by UNINA Research Team).

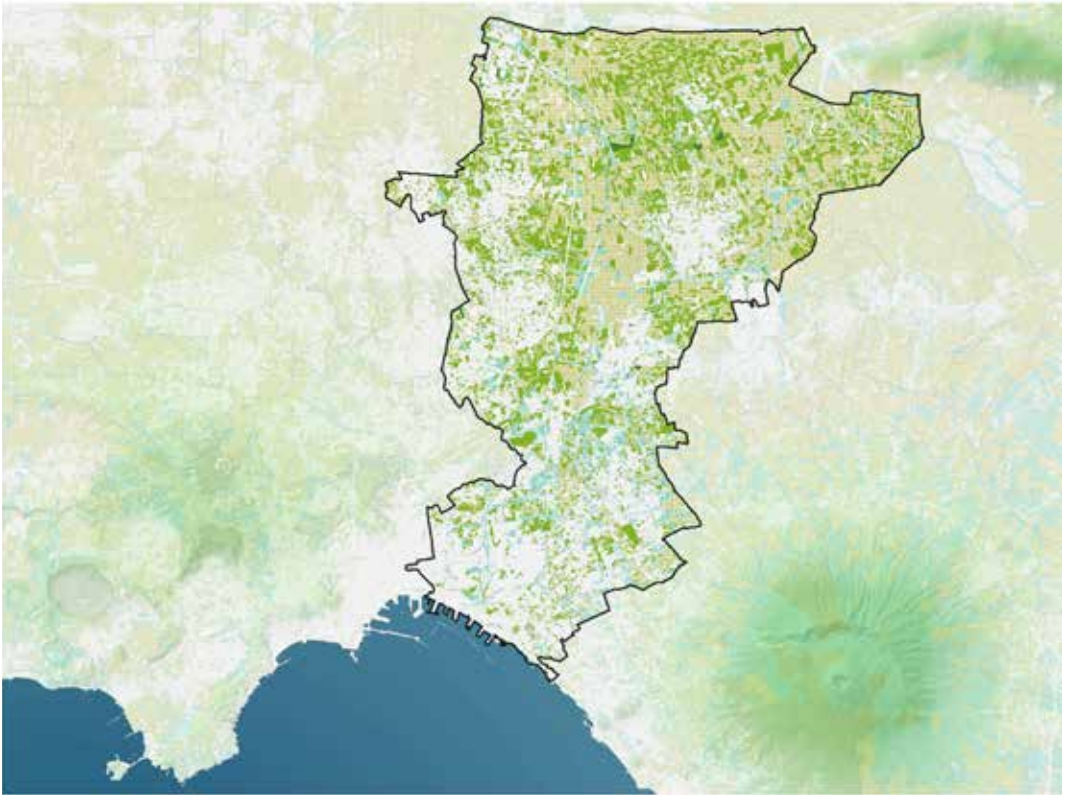
This paper illustrates the first advances of the Neapolitan research team, in applying a crosscutting analysis of the study area by the aim of providing a scientific based description of peri-urban areas. The analysis is oriented to collect quantitative and qualitative data, as well as data for the spatial analysis, for representing, understanding and improving the relationship between the detection of peri-urban area borders and the current urban metabolism of waste flows.

### Case study area

As part of the REPAiR proposal, two pilot cases are carried out in order to develop and test eco-innovative solutions in peri-urban areas: Naples, in Italy and Amsterdam, in The Netherlands. The other partners (Pecs, Hungary; Ghent, Belgium; Hamburg, Germany; and Lodz, Poland) will test the capacity of transferring knowledge within the consortium. Specifically, in Naples the research focus is mainly ori-

ented on the Wasted Landscapes, deepening territorial and landscape issues (fig. 3). Whereas, in Amsterdam, the research deepens the knowledge on the potentialities of circular economy, stressing both the waste/resource flows optimization and business development.

The Italian case study area is located within the Metropolitan Area of Naples, where waste flows and Wasted Landscapes characterize the peri-urban territory. Sadly known as '*Terra dei Fuochi*' ('Land of Fires' in English – authors' translation), the Metropolitan Area of Naples is increasingly losing its former values as relevant area for agriculture. The dramatic exploitation of the original agricultural habitats leads to the deep degradation of the environmental and cultural assets (Legambiente, 2015); although, criminal organizations have significant influence in this area, especially in terms of illegal waste management and of built-up areas



**Fig. 4** – REPAiR Focus Area within the Metropolitan Area of Naples (Graphic: Pasquale Inglesse).

development. In addition, the whole Campania Region has potentially 2551 contaminated sites, mostly of which are landfills or other areas of uncontrolled waste dumping. The Campania Region presents six Sites of National Interest (SIN), areas featured by relevant pollution; hence, the 15.8% of the entire region is polluted, ranging 2,157 km<sup>2</sup> (ARPAC 2008). These alarming data make urgent for planners, professionals and decision makers to move forward this situation, finding strategies to improve the quality of living conditions. According to this, the REPAiR team is focusing on a wide, sprawling urban area, hereinafter called Focus Area. It is located at the edges of the compact cities, and featured by the lack of planning and by illegal building activities. Here the historical centers, mostly originated from the former rural areas, have merged in-

to a continuous urban environment, where hybridization exists between urban and rural landscapes. Lack of facilities, public infrastructures and public spaces characterize the Focus Area too. There is not an acclaimed tradition of spatial planning, nor did regional and / or municipal levels of planning, thus such territorial 'fragmentation' (with low quality urban patterns) generate a sort of 'no man's land'.

#### **Materials and Methods: Peri-urban areas analysis**

Starting from such description, the first aim of the research team is to provide a scientific based definition of peri-urban area within the Focus Area and in the context of the Metropolitan Area of Naples. The first assumption regards the definition of how the Focus Area should be described (Geldermans et al., 2017):





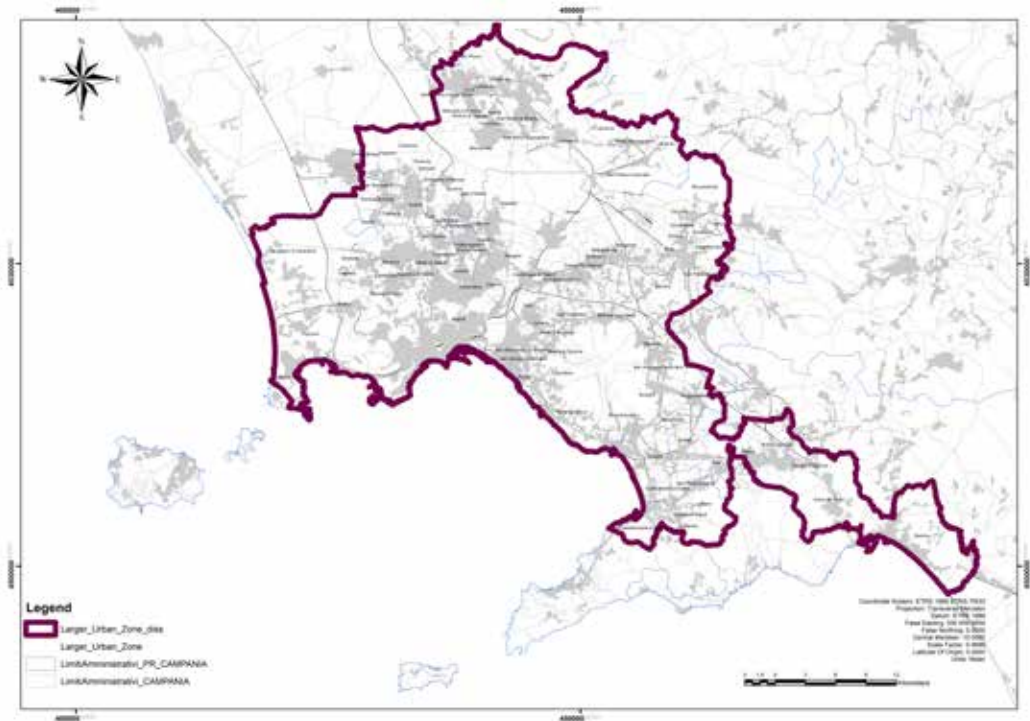


Fig. 6 – Commuting-zone identification - 145.000 ha.

interaction of urban and rural elements» (Wandl *et al.*, 2014).

To understand the peri-urban characteristics of the Metropolitan Area of Naples, the research compares some specific territorial features, carried out by distinguishing (and mapping) the follow urban patterns: A) the City, B) the Commuting Zone and C) Territories in transformation.

Furthermore, the research distinguishes the following steps in methods:

- Step 1: Definition and individuation of 'City'
- Step 2: Individuation of 'Commuting Zone'
- Step 3: Individuation of the 'Territories-in-between'
- Step 4: Individuation of the 'Territories-in-between' in the Focus Area

In Step 1, the research unit mapped the 'City' according to the New OECD-EC Definition (2012) using the following data: CORINE Land Cover 2012, XV

ISTAT Census Data and the administrative boundary (fig. 5). Step 1 was done in four sub-steps:

- All grid cells with a density of more than 1.500 inhabitants per sq. km are selected;
- Then contiguous high-density cells are clustered, gaps are filled and only the clusters with a minimum population of 50.000 inhabitants are kept as an 'urban centre';
- All the municipalities (local administrative unit's level 2 or LAU2) with at least half their population inside the urban center are selected as candidates to become part of the city.
- The city is defined ensuring that:
  - there is a link to the political level;
  - that at least 50% of city the population lives in an urban centre; and
  - that at least 75% of the population of the urban centre lives in a city.



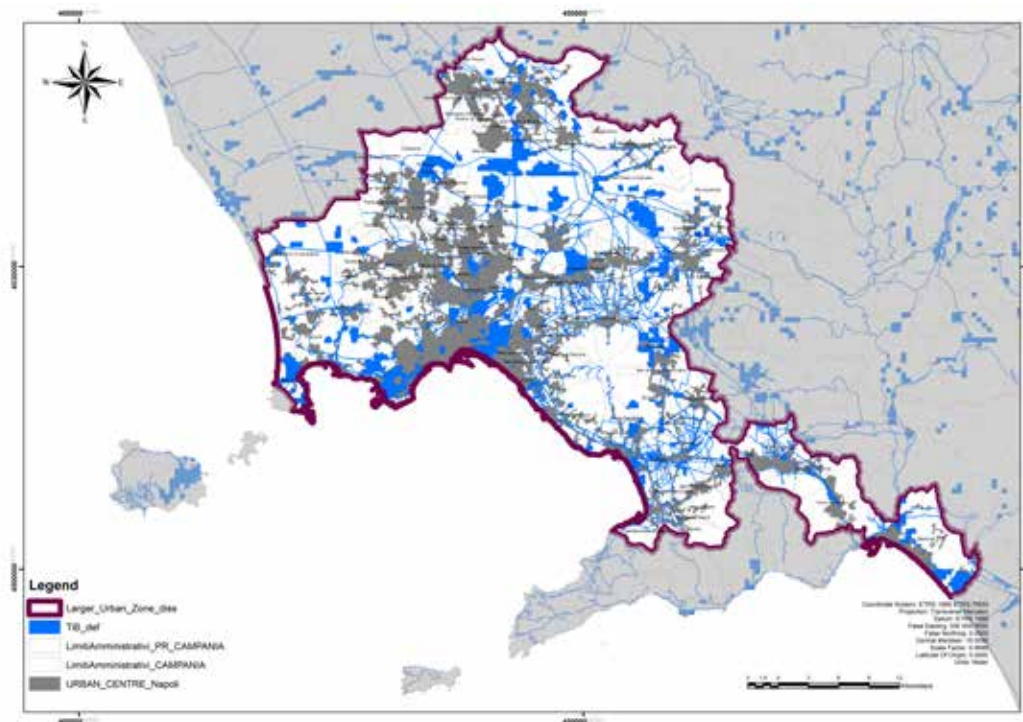


Fig. 7 – Territories in-between identification - 145.000 ha.

In Step 2, the research unit mapped the 'Commuting zone' (Fig.6) according to the New OECD-EC Definition (2012) using the Commuting Flows Data that are in the XV ISTAT Census Data. As for the previous step, the second step requires three sub-steps:

- Less than 15% of employed persons living in one city work in another city, these cities are treated as a single city.
- All municipalities with at least 15% of their employed residents working in a city are identified.
- Municipalities surrounded by a single functional area are included and non-contiguous municipalities are dropped.

The step 3 was achieved with the following GIS operations:

- Dividing the area into 500x500m (0.25 km<sup>2</sup>) grid cells and selecting those grid cells with a maximum population density that is characteristic for

territories-in-between (150-5000 In/km<sup>2</sup>). This density corresponds in a grid cell a number of inhabitants of 38-1250 In/Cell

- Adding those grid cells, with a maximum rural population that spatially overlap with typical infrastructures and services;
- Subtracting those grid cells with territories-in-between corresponding maximum population that are not characterized by the intermingling of built and open landscape pattern. To this were subtracted the areas that are classified as class 111 in CLC 2012.

At the end the Territories In-Between define the commuting zone with a precise range of population density according with Wandl (2014), and they are not continuous urban areas (fig. 7).

The Step 4 corresponds to the cutting of the x map with a shape of municipalities within the selected focus area.

## urban-rural classifications

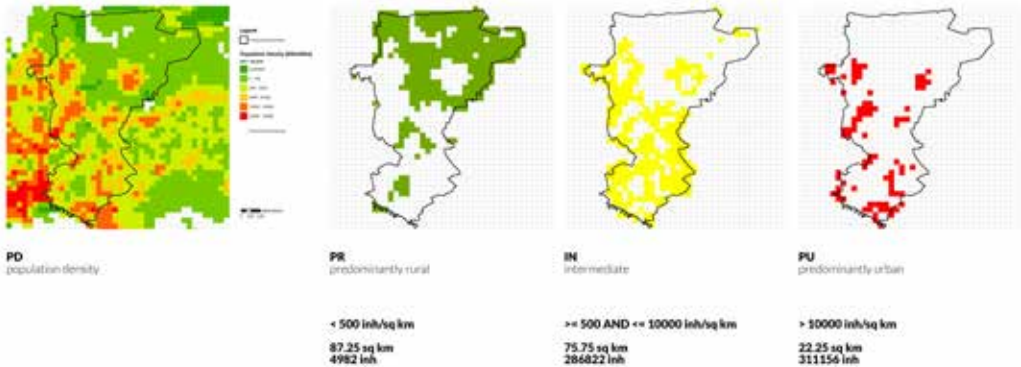


Fig. 8-9 – Urban-rural classification and peri-urban areas identification (Graphic: Pasquale Inglese).

## Results and Discussion

The 'territories-in-between' of the Metropolitan Area of Naples are identified from the interconnection of commuting areas and infrastructure networks, excluding the urban continuity.

On a total Focus Area surface of 163.72 km<sup>2</sup>, the area is equal to 4153 ha, so that the 'Territories-in-between' therefore represent the 25% of the whole Focus Area. This percentage (25%) is significantly lower than that determined by Wandl (2014) for Southern Netherlands (54%), but higher than the percentage of the Tyrol Region (estimated as 1%), also calculated in Wandl 2014. Furthermore, the 'Territories-in-between' value (25%) is consistent with the observation of the Metropolitan Area of Naples, and it strengthens the idea that an approach based on the land cover category 'urban-dis-

continuous' as a starting point would be misleading. The result is that the 'Territories-in-between' not correspond to the whole Focus Area. Conversely, they define specific areas within the selected area where it is more likely to find wastescapes and territories in transition of uses. Therefore, the 'Territories-in-between' were selected within the commuting zone, and featured by a precise range of population density. Furthermore, the originality of the research approach is to not consider these areas through the assumption of the spatial proximities with the city.

It is possible to recognize numerous spaces 'in transition' and in a 'waiting condition', such as the Eastern part of Naples, the fringe areas of Casoria, Acerra and Afragola (fig. 8), the vast plain around Caivano (fig. 9), and many others. These 'stand-by-spac-

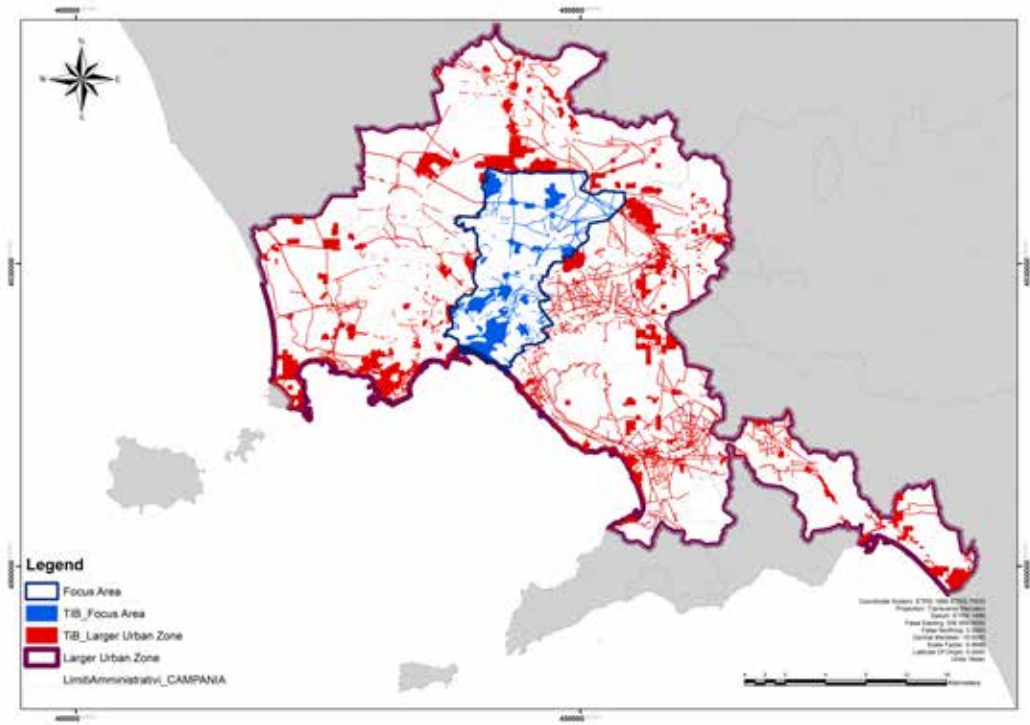


Fig. 10 – Territories in-between identification – additional approach.

es' are declining or have ended their lifecycle; today they represent spaces with a strong potentiality. Indeed, they can represent strategic parts for the regeneration of the whole Focus Area, especially if included in the new topological and functional framework that can result by the on-field work with residents and stakeholders.

### Conclusions

In conclusion, we assume the Wandl approach is not considering peri-urban as a gradient, resulting from the distance of the urban center to the edge fan, while the definition of peri-urban as areas with both urbanization features and infrastructure availability. These results are consistent with the description of the urban typologies recorded in the Focus Area by the aim of fostering a change in sustainable resource management, and thereby preventing waste generation. Through the recognition of the territo-

ries-in-between, REPAiR aims at providing dedicated design and planning approach by which reducing wastescapes and expressing the site potentials in terms of planning, providing new uses for the wasted lands consistent with the local needs (i.e. new public spaces, as green infrastructures with high eco-systemic values). Planning and architecture are also considered key challenges to reconfigure peri-urban areas, asserting new collective identities, overcoming the social and ecological vulnerability of those territorial systems (Russo, 2012).

In the current phase, the process of selection of the Focus Area through spatial analysis has shared within the Living Lab carried out in the Afragola Municipality, where a wide range of stakeholders is involved in (Stählbröst and Holst, 2012). Moreover, the territories-in-between defined through the spatial analysis could be used by local authorities, to better recognize and manage urban issues in terms of



**Fig. 11** – Fringe areas between Casoria and Afragola (Photo: Anna Attademo).

waste reduction and management, by the aim of applying circularity models, including those of Circular Economy. Such ambitious goal explain the reason of identifying such analytical methods for enhancing the spatial relations between waste cycles and urban metabolism, focusing on the specific characteristic of the territories. The methodology could be applied for the entire Metropolitan Area of Naples.

The methodology for the selection of the case study area is scalable and transferable to other European case studies of REPAiR, considering the local differences. Moreover, the selection of the territories-in-between can be tested through the participatory process, together with the stakeholders involved in the Living Labs (fig. 10), generating new ideas, creative innovations and strategies for the implementation of circularity in planning and in local economies.

### Endnotes

<sup>1</sup> All the paragraphs have been written and approved by all the authors M. Rigillo, L. Amenta, A. Attademo, L. Boccia, E. Formato and M. Russo.

<sup>2</sup> See more at the link <https://ec.europa.eu/programmes/horizon2020/>.

<sup>3</sup> REPAiR has received funding from the European Union's Horizon 2020 research and innovation programme under Grant Agreement No 688920.

<sup>4</sup> In REPAiR research proposal is used the term 'Wasted Landscapes', referring to open spaces as well as built entities, like buildings and infrastructure. In the development of the project, the research team widened its meaning, introducing the term 'Wastescares', referring to the material and immaterial condition of these landscapes.



## References

- Allen A., Broto V.C., Rapoport E. 2012, *Interdisciplinary Perspectives on Urban Metabolism. A review of the literature*, «Journal of Industrial Ecology», n. 16(6), pp. 851-861.
- Amenta L., 2015, *Reverse Land. Wasted Landscapes as a resource to re-cycle contemporary cities*, University of Naples Federico II, Napoli.
- Amenta L., Attademo A. 2016, *Circular wastescapes. Waste as a resource for peri-urban landscapes planning*, «CRIOS Critica degli Ordinamenti Spaziali», n. 12, pp. 79-88.
- Bilgram V., Brem A., Voigt K.I. 2008, *User-centric innovations in new product development – Systematic identification of lead users harnessing interactive and collaborative online-tools*, «International Journal of Innovation Management», n. 12(3), pp. 419-458.
- Campagna M. 2014, *Geodesign: dai contenuti metodologici all'innovazione nelle pratiche*, in Atti della XVII Conferenza Nazionale SIU, Società Italiana degli urbanisti. L'urbanistica italiana nel mondo, Milano, 15-16 maggio 2014. (ed.), Planum Publisher, Roma-Milano.
- Davoudi S. 2012, *Resilience: A Bridging Concept or a Dead End?*, «Planning Theory & Practice», n. 13(2), pp. 299-307.
- Dijkstra L., Poelman H. 2012, *Cities in Europe: The new OECD-EC definition*, Regional and Urban Policy, 16, <[http://ec.europa.eu/regional\\_policy/sources/docgener/focus/2012\\_01\\_city.pdf](http://ec.europa.eu/regional_policy/sources/docgener/focus/2012_01_city.pdf)>.
- Donadieu P. 1998, *Campagnes urbaines*, Actes Sud / E.N.S.P, Arles-Versailles.
- European Commission 2011, *Innovation for a sustainable Future – The Eco-innovation Action Plan (Eco-AP)*, European Commission. <<https://eur-lex.europa.eu/legal-content/EN/TXT/PDF/?uri=CELEX:52011DC0899&from=EN>> (06/18).
- European Commission 2018, *Innovation Policies, European Commission, Innovation Policies*. <[https://ec.europa.eu/growth/industry/innovation/policy\\_en](https://ec.europa.eu/growth/industry/innovation/policy_en)> (06/18).
- European Commission 2018, *ECO-INNOVATION at the heart of European policies*. <<https://ec.europa.eu/environment/eoap/about-action-plan/objectives-methodology>> (06/18).
- European Commission 2008, *Directive 2008/98/EC of the European Parliament and of the Council of 19 November 2008 on waste and repealing certain Directives*. <<https://eur-lex.europa.eu/legal-content/EN/TXT/?uri=celex%3A32008L0098>> (07/18).
- European Commission 2010, *Being wise with waste: the EU's approach to waste management*. <<http://ec.europa.eu/environment/waste/pdf/WASTE%20BROCHURE.pdf>>.
- European Commission 2011, *A resource-efficient Europe – Flagship initiative under the Europe 2020 Strategy*. European Commission. <<https://www.eea.europa.eu/policy-documents/a-resource-efficient-europe-flagship>> (07/18).
- European Commission 2012, *Eco-innovation the key to Europe's future competitiveness* <[http://ec.europa.eu/environment/pubs/pdf/factsheets/eco\\_innovation.pdf](http://ec.europa.eu/environment/pubs/pdf/factsheets/eco_innovation.pdf)> (07/18).
- European Commission 2014, *Towards a circular economy: A zero waste programme for Europe*, <<https://www.oecd.org/env/outreach/EC-Circular-economy.pdf>> (05/18).
- European Commission 2011, *EC COMMUNICATION: Roadmap to a Resource Efficient Europe*, European Commission, 32, <[http://doi.org/COM\(2011\)571final](http://doi.org/COM(2011)571final)> (06/18).
- European Union 2010, *Europe 2020 – A strategy for smart, sustainable and inclusive growth*, Communication from the Commission, <<http://doi.org/10.1016/j.resconrec.2010.03.010>> (06/18).
- Forman R.T. 1995, *Land Mosaics. The ecology of landscapes and regions*, Cambridge University Press, Cambridge/New York.
- Girardet H. 2000, *Cities, People, Planet, State of the World*. <[http://bieb.ruaf.org/ruaf\\_bieb/upload/2407.pdf](http://bieb.ruaf.org/ruaf_bieb/upload/2407.pdf)> (05/18).
- Golubiewski N. 2012, *Is there a metabolism of an urban ecosystem? An ecological critique*, «Ambio», n. 41(7), pp. 751-764.
- Ibañez D., Katsikis N. 2014, *New Geographies 06*, in *Grounding Metabolism*, Harvard University Press. pp. 2-10.
- Indovina F. (ed.) 2009, *Dalla città diffusa all'arcipelago metropolitano*, FrancoAngeli, Milano.

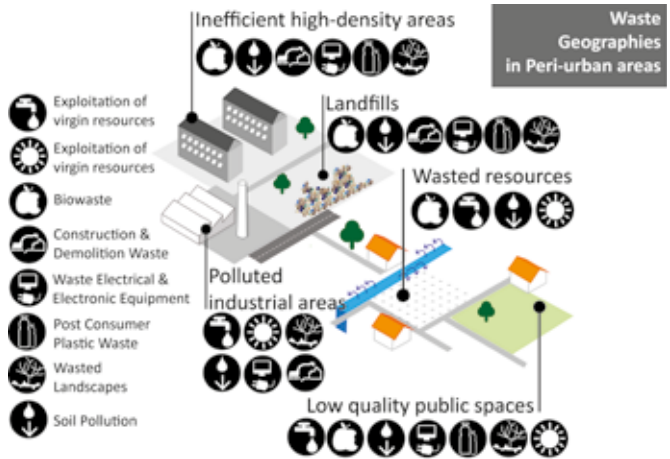


**Fig. 13** – REPAiR Waste Geography and 'circular features' in Peri-Urban Areas (Image credit: REPAiR proposal. Graphic: Libera Amenta).

**Fig. 14** – REPAiR's stakeholders landscape (Image credit: REPAiR proposal. Graphic: Libera Amenta).

opposite page

**Fig. 12** – Wastescapes in the Metropolitan area of Naples (Photo: Libera Amenta).



Latouche S. 2009, *Farewell to Growth*, Polity Press, UK. doi: 10.1111/j.1468-2257.2011.00571.x.

Legambiente 2015, *Ecomafia 2015*. <<http://www.legambiente.it/contenuti/dossier/ecomafia-2015>> (07/18).

Mitchell W.J. 2003, *Me++ : the cyborg self and the networked city*, MIT Press, Cambridge.

Palestino F. 2015, *Per un'agenda radicale della Terra dei Fuochi*, «CRIOS Critica degli Ordinamenti Spaziali», n. 10.

Russo M. 2012, *L'esperienza come progetto: conoscere l'area est di Napoli*, in Lucci R., Russo M. (eds), *Napoli verso oriente*, Clean edizioni, Napoli, pp. 144-163.

Russo M., et al. 2017, *REPAiR PULLs*, Handbook D5.1.

Ståhlbröst A., Holst M. 2012, *The Living Lab Methodology Handbook*, Social Informatics at Luleå University of Technology and CDT – Centre for Distance-spanning Technology, Sweden.

Soja E. 2000, *Postmetropolis: Critical Studies of Cities and Regions*, Basil Blackwell, Oxford.

Steen K., Bueren E. Van 2017, *Urban Living Labs. A living lab way of working*, Amsterdam Institute for Advanced Metropolitan Solutions Delft University of Technology.

Steinitz C. 2012, *A Framework for Geodesign. Changing Geography by Design*, E. Press, New York.

Swyngedouw E. 2006, *Metabolic urbanization*, in *In the nature of cities: Urban political ecology*, Routledge, UK, pp. 20-39.

Viganò P. (ed.) 2001, *Territori della nuova modernità Provincia di Lecce. Assessorato alla gestione territoriale: Piano territoriale di coordinamento = Territories of a new modernity*, Electa, Napoli.

Wandl A. et al. 2014, *Beyond urban-rural classifications: Characterising and mapping territories-in-between across Europe*, «Landscape and Urban Planning», n. 130, pp. 50-63.

